















**UTILITY NOTES**

- 1. Coordinate all site utility work with the mechanical and electrical drawings.
- 2. The locations of underground utilities shown on field surveys and local utility company records. It shall be the contractor's full responsibility to contact the utility companies to locate these facilities prior to starting construction. No additional compensation shall be paid to the contractor for damage and report to these facilities caused by his work force.
- 3. Refer to standard detail sheets.
- 4. The contractor is responsible for obtaining and paying for all permits required to perform the work proposed on these notes.
- 5. Utility work shown per HALF Associates plan dated 3/10/08. Proposed site franchise utilities and water may need to be relocated as part of roadway improvements to FM 423.

**WATER NOTES**

- 1. All service lines 2" or less shall be copper Type K<sub>35</sub>. Size to be as noted on this sheet. Service connection to have a minimum of 60" cover.
- 2. The contractor's price shall include all fees and opportunities required by the utility company. Coordinate all service work with The Colony Engineering/Water Department.
- 3. The contractor is responsible for trenching, backfill, pipe material and installation for a complete working service.
- 4. Contractor shall verify the size and location of existing water main prior to any construction.

**ELECTRICAL NOTES**

- 1. It shall be the contractor's responsibility to trench, backfill, provide and install meter base and (2) 4" PVC conduits from the building to the utility pole. Contractor shall include all fees required by the utility company to provide a complete working service.
- 2. Transformer to be installed per utility companies specifications.
- 3. The contractor shall be responsible for making the top to the sewer main line per The Colony Water Dept. Control standards.
- 4. Coordinate all work with the Colony water dept. and city inspector.
- 5. The contractor must notify water department and city inspector before performing work.

**NATURAL GAS NOTES**

- 1. The contractor shall be responsible for trenching, backfill, pipe installation and material from the building to the existing gas line. Coordinate all work with natural gas company.
- 2. The contractor shall provide telephone company.

**TELEPHONE NOTES**

- 1. The contractor shall notify the City inspectors department with smooth inside walls.
- 2. All storm sewer pipe shall be 12" or greater, pipe shall be HDPE or SDR 26.
- 3. The contractor is responsible for all trenching, backfill, and pipe installation. Coordinate all work with The Colony.
- 4. Contractor shall verify the size, location, invert elevation, and condition of existing storm sewer prior to any trenching and current construction and marked specifications.
- 5. SAND/SILT separator and reclaim system by CANWASH SYSTEM BY CANWASH CONSULTANT AND MECHANICAL ENGINEER. DETAIL SHEET WILL BE FORWARDED.
- 6. TRENCH DRAINS TO DRAIN TO RECLAIM TANKS.
- 7. COORDINATE IRRIGATION SLEEVE LOCATION WITH IRRIGATION PLAN SHEET C12
- 8. EXISTING REBAR RING LINE LOCATION UNKNOWN. CONTRACTOR TO EXERCISE EXTREME CAUTION WHEN EXCAVATING WITHIN EASEMENT AND RIGHT OF WAY.

**STORM SEWER NOTES**

- 1. All storm sewer pipe shall be 12" or greater, pipe shall be HDPE or SDR 26.
- 2. Storm and sanitary connections to be exposed and field verified. If a conflict exists contractor shall contact ATWELL-HICKS IMMEDIATELY.
- 3. ALL CONDUITS TO HAVE AT LEAST 24" OF CLEARANCE UNLESS OTHERWISE NOTED.
- 4. REFER TO BUILDING PLANS AND MEP DOCUMENTS FOR RECLAIM LINES AND TANK INVERTS AND DETAILS.
- 5. INVERT CONNECTION PROVIDED AT SANITARY MADE TO AVOID CONFLICTS WITH STORM SEWER. THE TAP ON THE SANITARY SHALL BE MADE ON TOP OF SANITARY AND MAY REQUIRE FITTINGS (SEE DETAIL THIS SHEET).
- 6. SAND/SILT separator and reclaim system by CANWASH SYSTEM BY CANWASH CONSULTANT AND MECHANICAL ENGINEER. DETAIL SHEET WILL BE FORWARDED.
- 7. TRENCH DRAINS TO DRAIN TO RECLAIM TANKS.
- 8. COORDINATE IRRIGATION SLEEVE LOCATION WITH IRRIGATION PLAN SHEET C12
- 9. EXISTING REBAR RING LINE LOCATION UNKNOWN. CONTRACTOR TO EXERCISE EXTREME CAUTION WHEN EXCAVATING WITHIN EASEMENT AND RIGHT OF WAY.

**STORM STRUCTURE SCHEDULE**

Number	Item	Structure
R1	PROP. 2.3	CB
R2	PROP. 2.3	CB
R3	PROP. 2.3	CB
R4	PROP. 2.3	CB
R5	PROP. 2.3	CB
R6	PROP. 2.3	CB
R7	PROP. 2.3	CB
R8	PROP. 2.3	CB
R9	PROP. 2.3	CB
R10	PROP. 2.3	CB
R11	PROP. 2.3	CB
R12	PROP. 2.3	CB
R13	PROP. 2.3	CB
R14	PROP. 2.3	CB
R15	PROP. 2.3	CB
R16	PROP. 2.3	CB
R17	PROP. 2.3	CB
R18	PROP. 2.3	CB
R19	PROP. 2.3	CB
R20	PROP. 2.3	CB
R21	PROP. 2.3	CB
R22	PROP. 2.3	CB
R23	PROP. 2.3	CB
R24	PROP. 2.3	CB
R25	PROP. 2.3	CB
R26	PROP. 2.3	CB
R27	PROP. 2.3	CB
R28	PROP. 2.3	CB
R29	PROP. 2.3	CB
R30	PROP. 2.3	CB
R31	PROP. 2.3	CB
R32	PROP. 2.3	CB
R33	PROP. 2.3	CB
R34	PROP. 2.3	CB
R35	PROP. 2.3	CB
R36	PROP. 2.3	CB
R37	PROP. 2.3	CB
R38	PROP. 2.3	CB
R39	PROP. 2.3	CB
R40	PROP. 2.3	CB
R41	PROP. 2.3	CB
R42	PROP. 2.3	CB
R43	PROP. 2.3	CB
R44	PROP. 2.3	CB
R45	PROP. 2.3	CB
R46	PROP. 2.3	CB
R47	PROP. 2.3	CB
R48	PROP. 2.3	CB
R49	PROP. 2.3	CB
R50	PROP. 2.3	CB
R51	PROP. 2.3	CB
R52	PROP. 2.3	CB
R53	PROP. 2.3	CB
R54	PROP. 2.3	CB
R55	PROP. 2.3	CB
R56	PROP. 2.3	CB
R57	PROP. 2.3	CB
R58	PROP. 2.3	CB
R59	PROP. 2.3	CB
R60	PROP. 2.3	CB
R61	PROP. 2.3	CB
R62	PROP. 2.3	CB
R63	PROP. 2.3	CB
R64	PROP. 2.3	CB
R65	PROP. 2.3	CB
R66	PROP. 2.3	CB
R67	PROP. 2.3	CB
R68	PROP. 2.3	CB
R69	PROP. 2.3	CB
R70	PROP. 2.3	CB
R71	PROP. 2.3	CB
R72	PROP. 2.3	CB
R73	PROP. 2.3	CB
R74	PROP. 2.3	CB
R75	PROP. 2.3	CB
R76	PROP. 2.3	CB
R77	PROP. 2.3	CB
R78	PROP. 2.3	CB
R79	PROP. 2.3	CB
R80	PROP. 2.3	CB
R81	PROP. 2.3	CB
R82	PROP. 2.3	CB
R83	PROP. 2.3	CB
R84	PROP. 2.3	CB
R85	PROP. 2.3	CB
R86	PROP. 2.3	CB
R87	PROP. 2.3	CB
R88	PROP. 2.3	CB
R89	PROP. 2.3	CB
R90	PROP. 2.3	CB
R91	PROP. 2.3	CB
R92	PROP. 2.3	CB
R93	PROP. 2.3	CB
R94	PROP. 2.3	CB
R95	PROP. 2.3	CB
R96	PROP. 2.3	CB
R97	PROP. 2.3	CB
R98	PROP. 2.3	CB
R99	PROP. 2.3	CB
R100	PROP. 2.3	CB

**SAINTARY CLEAN OUT STRUCTURE SCHEDULE**

Number	Item	Structure
CO 1	PROP. 2.3	CB
CO 2	PROP. 2.3	CB
CO 3	PROP. 2.3	CB
CO 4	PROP. 2.3	CB
CO 5	PROP. 2.3	CB
CO 6	PROP. 2.3	CB
CO 7	PROP. 2.3	CB
CO 8	PROP. 2.3	CB
CO 9	PROP. 2.3	CB
CO 10	PROP. 2.3	CB
CO 11	PROP. 2.3	CB
CO 12	PROP. 2.3	CB
CO 13	PROP. 2.3	CB
CO 14	PROP. 2.3	CB
CO 15	PROP. 2.3	CB
CO 16	PROP. 2.3	CB
CO 17	PROP. 2.3	CB
CO 18	PROP. 2.3	CB
CO 19	PROP. 2.3	CB
CO 20	PROP. 2.3	CB
CO 21	PROP. 2.3	CB
CO 22	PROP. 2.3	CB
CO 23	PROP. 2.3	CB
CO 24	PROP. 2.3	CB
CO 25	PROP. 2.3	CB
CO 26	PROP. 2.3	CB
CO 27	PROP. 2.3	CB
CO 28	PROP. 2.3	CB
CO 29	PROP. 2.3	CB
CO 30	PROP. 2.3	CB
CO 31	PROP. 2.3	CB
CO 32	PROP. 2.3	CB
CO 33	PROP. 2.3	CB
CO 34	PROP. 2.3	CB
CO 35	PROP. 2.3	CB
CO 36	PROP. 2.3	CB
CO 37	PROP. 2.3	CB
CO 38	PROP. 2.3	CB
CO 39	PROP. 2.3	CB
CO 40	PROP. 2.3	CB
CO 41	PROP. 2.3	CB
CO 42	PROP. 2.3	CB
CO 43	PROP. 2.3	CB
CO 44	PROP. 2.3	CB
CO 45	PROP. 2.3	CB
CO 46	PROP. 2.3	CB
CO 47	PROP. 2.3	CB
CO 48	PROP. 2.3	CB
CO 49	PROP. 2.3	CB
CO 50	PROP. 2.3	CB
CO 51	PROP. 2.3	CB
CO 52	PROP. 2.3	CB
CO 53	PROP. 2.3	CB
CO 54	PROP. 2.3	CB
CO 55	PROP. 2.3	CB
CO 56	PROP. 2.3	CB
CO 57	PROP. 2.3	CB
CO 58	PROP. 2.3	CB
CO 59	PROP. 2.3	CB
CO 60	PROP. 2.3	CB
CO 61	PROP. 2.3	CB
CO 62	PROP. 2.3	CB
CO 63	PROP. 2.3	CB
CO 64	PROP. 2.3	CB
CO 65	PROP. 2.3	CB
CO 66	PROP. 2.3	CB
CO 67	PROP. 2.3	CB
CO 68	PROP. 2.3	CB
CO 69	PROP. 2.3	CB
CO 70	PROP. 2.3	CB
CO 71	PROP. 2.3	CB
CO 72	PROP. 2.3	CB
CO 73	PROP. 2.3	CB
CO 74	PROP. 2.3	CB
CO 75	PROP. 2.3	CB
CO 76	PROP. 2.3	CB
CO 77	PROP. 2.3	CB
CO 78	PROP. 2.3	CB
CO 79	PROP. 2.3	CB
CO 80	PROP. 2.3	CB
CO 81	PROP. 2.3	CB
CO 82	PROP. 2.3	CB
CO 83	PROP. 2.3	CB
CO 84	PROP. 2.3	CB
CO 85	PROP. 2.3	CB
CO 86	PROP. 2.3	CB
CO 87	PROP. 2.3	CB
CO 88	PROP. 2.3	CB
CO 89	PROP. 2.3	CB
CO 90	PROP. 2.3	CB
CO 91	PROP. 2.3	CB
CO 92	PROP. 2.3	CB
CO 93	PROP. 2.3	CB
CO 94	PROP. 2.3	CB
CO 95	PROP. 2.3	CB
CO 96	PROP. 2.3	CB
CO 97	PROP. 2.3	CB
CO 98	PROP. 2.3	CB
CO 99	PROP. 2.3	CB
CO 100	PROP. 2.3	CB

**WATER STRUCTURE SCHEDULE**

Number	Item	Structure
W1	PROP. 2.3	CB
W2	PROP. 2.3	CB
W3	PROP. 2.3	CB
W4	PROP. 2.3	CB
W5	PROP. 2.3	CB
W6	PROP. 2.3	CB
W7	PROP. 2.3	CB
W8	PROP. 2.3	CB
W9	PROP. 2.3	CB
W10	PROP. 2.3	CB
W11	PROP. 2.3	CB
W12	PROP. 2.3	CB
W13	PROP. 2.3	CB
W14	PROP. 2.3	CB
W15	PROP. 2.3	CB
W16	PROP. 2.3	CB
W17	PROP. 2.3	CB
W18	PROP. 2.3	CB
W19	PROP. 2.3	CB
W20	PROP. 2.3	CB
W21	PROP. 2.3	CB
W22	PROP. 2.3	CB
W23	PROP. 2.3	CB
W24	PROP. 2.3	CB
W25	PROP. 2.3	CB
W26	PROP. 2.3	CB
W27	PROP. 2.3	CB
W28	PROP. 2.3	CB
W29	PROP. 2.3	CB
W30	PROP. 2.3	CB
W31	PROP. 2.3	CB
W32	PROP. 2.3	CB
W33	PROP. 2.3	CB
W34	PROP. 2.3	CB
W35	PROP. 2.3	CB
W36	PROP. 2.3	CB
W37	PROP. 2.3	CB
W38	PROP. 2.3	CB
W39	PROP. 2.3	CB
W40	PROP. 2.3	CB
W41	PROP. 2.3	CB
W42	PROP. 2.3	CB
W43	PROP. 2.3	CB
W44	PROP. 2.3	CB
W45	PROP. 2.3	CB
W46	PROP. 2.3	CB
W47	PROP. 2.3	CB
W48	PROP. 2.3	CB
W49	PROP. 2.3	CB
W50	PROP. 2.3	CB
W51	PROP. 2.3	CB
W52	PROP. 2.3	CB
W53	PROP. 2.3	CB
W54	PROP. 2.3	CB
W55	PROP. 2.3	CB
W56	PROP. 2.3	CB
W57	PROP. 2.3	CB
W58	PROP. 2.3	CB
W59	PROP. 2.3	CB
W60	PROP. 2.3	CB
W61	PROP. 2.3	CB
W62	PROP. 2.3	CB
W63	PROP. 2.3	CB
W64	PROP. 2.3	CB
W65	PROP. 2.3	CB
W66	PROP. 2.3	CB
W67	PROP. 2.3	CB
W68	PROP. 2.3	CB
W69	PROP. 2.3	CB
W70	PROP. 2.3	CB
W71	PROP. 2.3	CB
W72	PROP. 2.3	CB
W73	PROP. 2.3	CB
W74	PROP. 2.3	CB
W75	PROP. 2.3	CB
W76	PROP. 2.3	CB
W77	PROP. 2.3	CB
W78	PROP. 2.3	CB
W79	PROP. 2.3	CB
W80	PROP. 2.3	CB
W81	PROP. 2.3	CB
W82	PROP. 2.3	CB
W83	PROP. 2.3	CB
W84	PROP. 2.3	CB
W85	PROP. 2.3	CB
W86	PROP. 2.3	CB
W87	PROP. 2.3	CB
W88	PROP. 2.3	CB
W89	PROP. 2.3	CB
W90	PROP. 2.3	CB
W91	PROP. 2.3	CB
W92	PROP. 2.3	CB
W93	PROP. 2.3	CB
W94	PROP. 2.3	CB
W95	PROP. 2.3	CB
W96	PROP. 2.3	CB
W97	PROP. 2.3	CB
W98	PROP. 2.3	CB
W99	PROP. 2.3	CB
W100	PROP. 2.3	CB

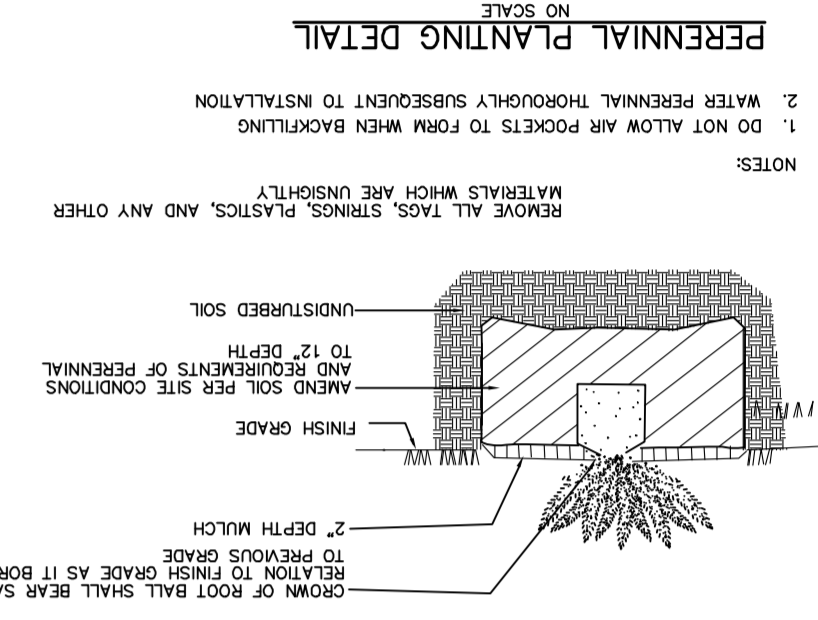
**UTILITY CROSSINGS**

NUMBER	UTILITY OWNER	EX. GAS	EX. SAN. SEWER	EX. WATER	APPROX. 11"	APPROX. 18"	APPROX. 27"	APPROX. 36"	APPROX. 48"	APPROX. 60"	APPROX. 72"	APPROX. 84"	APPROX. 96"	APPROX. 108"	APPROX. 120"	APPROX. 132"	APPROX. 144"	APPROX. 156"	APPROX. 168"	APPROX. 180"	APPROX. 192"	APPROX. 204"	APPROX. 216"	APPROX. 228"	APPROX. 240"	APPROX. 252"	APPROX. 264"	APPROX. 276"	APPROX. 288"	APPROX. 300"	APPROX. 312"	APPROX. 324"	APPROX. 336"	APPROX. 348"	APPROX. 360"	APPROX. 372"	APPROX. 384"	APPROX. 396"	APPROX. 408"	APPROX. 420"	APPROX. 432"	APPROX. 444"	APPROX. 456"	APPROX. 468"	APPROX. 480"	APPROX. 492"	APPROX. 504"	APPROX. 516"	APPROX. 528"	APPROX. 540"	APPROX. 552"	APPROX. 564"	APPROX. 576"	APPROX. 588"	APPROX. 600"	APPROX. 612"	APPROX. 624"	APPROX. 636"	APPROX. 648"	APPROX. 660"	APPROX. 672"	APPROX. 684"	APPROX. 696"	APPROX. 708"	APPROX. 720"	APPROX. 732"	APPROX. 744"	APPROX. 756"	APPROX. 768"	APPROX. 780"	APPROX. 792"	APPROX. 804"	APPROX. 816"	APPROX. 828"	APPROX. 840"	APPROX. 852"	APPROX. 864"	APPROX. 876"	APPROX. 888"	APPROX. 900"	APPROX. 912"	APPROX. 924"	APPROX. 936"	APPROX. 948"	APPROX. 960"	APPROX. 972"	APPROX. 984"	APPROX. 996"	APPROX. 1008"	APPROX. 1020"	APPROX. 1032"	APPROX. 1044"	APPROX. 1056"	APPROX. 1068"	APPROX. 1080"	APPROX. 1092"	APPROX. 1104"	APPROX. 1116"	APPROX. 1128"	APPROX. 1140"	APPROX. 1152"	APPROX. 1164"	APPROX. 1176"	APPROX. 1188"	APPROX. 1200"	APPROX. 1212"	APPROX. 1224"	APPROX. 1236"	APPROX. 1248"	APPROX. 1260"	APPROX. 1272"	APPROX. 1284"	APPROX. 1296"	APPROX. 1308"	APPROX. 1320"	APPROX. 1332"	APPROX. 1344"	APPROX. 1356"	APPROX. 1368"	APPROX. 1380"	APPROX. 1392"	APPROX. 1404"	APPROX. 1416"	APPROX. 1428"	APPROX. 1440"	APPROX. 1452"	APPROX. 1464"	APPROX. 1476"	APPROX. 1488"	APPROX. 1500"	APPROX. 1512"	APPROX. 1524"	APPROX. 1536"	APPROX. 1548"	APPROX. 1560"
--------	---------------	---------	----------------	-----------	-------------	-------------	-------------	-------------	-------------	-------------	-------------	-------------	-------------	--------------	--------------	--------------	--------------	--------------	--------------	--------------	--------------	--------------	--------------	--------------	--------------	--------------	--------------	--------------	--------------	--------------	--------------	--------------	--------------	--------------	--------------	--------------	--------------	--------------	--------------	--------------	--------------	--------------	--------------	--------------	--------------	--------------	--------------	--------------	--------------	--------------	--------------	--------------	--------------	--------------	--------------	--------------	--------------	--------------	--------------	--------------	--------------	--------------	--------------	--------------	--------------	--------------	--------------	--------------	--------------	--------------	--------------	--------------	--------------	--------------	--------------	--------------	--------------	--------------	--------------	--------------	--------------	--------------	--------------	--------------	--------------	--------------	--------------	--------------	---------------	---------------	---------------	---------------	---------------	---------------	---------------	---------------	---------------	---------------	---------------	---------------	---------------	---------------	---------------	---------------	---------------	---------------	---------------	---------------	---------------	---------------	---------------	---------------	---------------	---------------	---------------	---------------	---------------	---------------	---------------	---------------	---------------	---------------	---------------	---------------	---------------	---------------	---------------	---------------	---------------	---------------	---------------	---------------	---------------	---------------	---------------

**Know what's below.**  
Call before you dig.

**NOTICE:**  
CONSTRUCTION SITE SAFETY IS THE SOLE RESPONSIBILITY OF THE CONTRACTOR. NEITHER THE OWNER NOR THE ENGINEER SHALL BE EXPECTED TO ASSUME ANY RESPONSIBILITY FOR THE EXACT LOCATION OF ALL EXISTING UTILITIES BEFORE COMMENCING WORK, AND AGREES TO BE FULLY RESPONSIBLE FOR ANY AND ALL DAMAGES WHICH MIGHT BE OCCASIONED BY THE CONTRACTOR'S FAILURE TO EXACTLY LOCATE AND PRESERVE ANY AND ALL UNDERGROUND UTILITIES.

**COPYRIGHT © ATWELL-HICKS**  
NO REPRODUCTION SHALL BE MADE WITHOUT THE PRIOR WRITTEN CONSENT OF ATWELL-HICKS

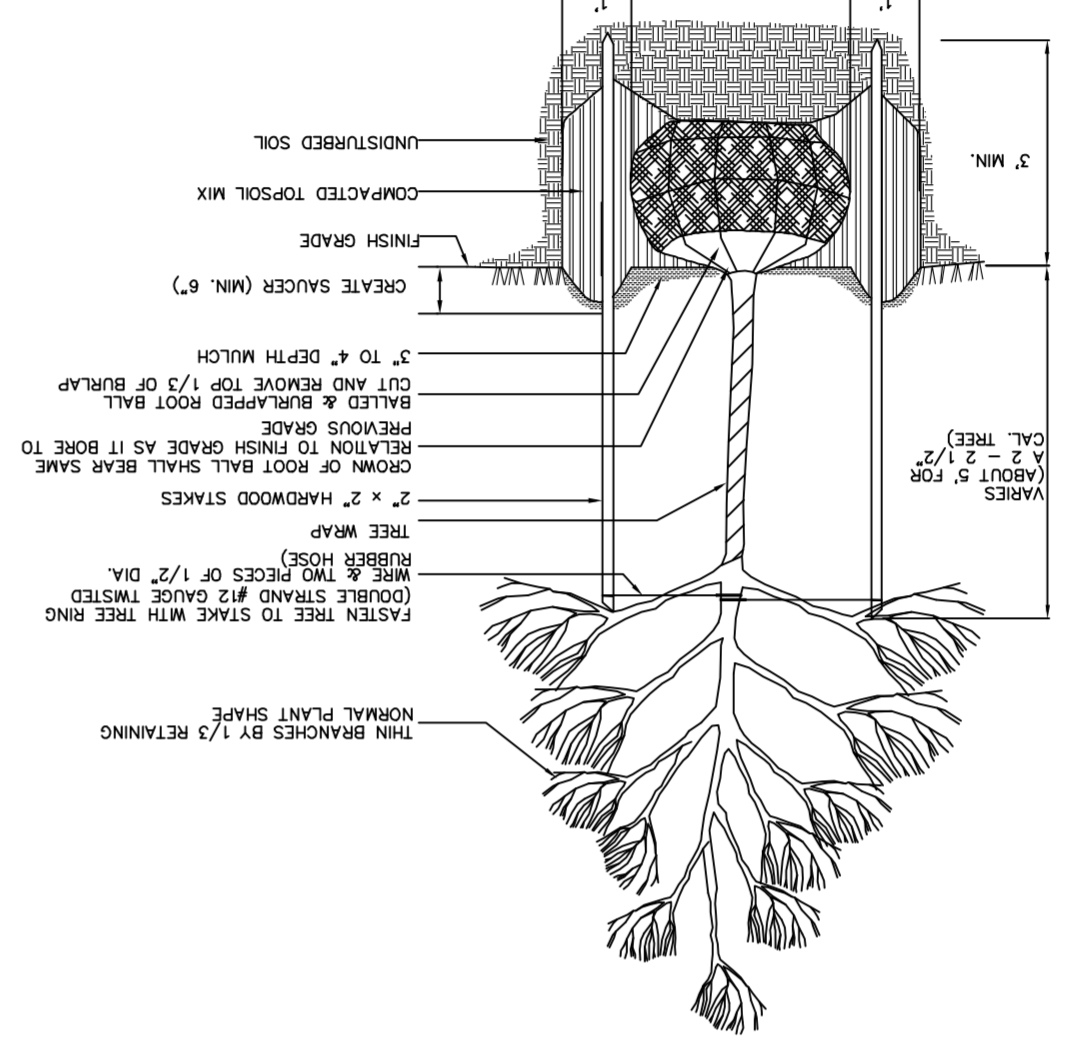


**PERENNIAL PLANTING DETAIL**  
NO SCALE

NOTES:  
1. DO NOT ALLOW AIR POCKETS TO FORM WHEN BACKFILLING.  
2. WATER PERENNIAL THOROUGHLY SUBSEQUENT TO INSTALLATION.

REMOVE ALL TWIGS, STONKS, PLASTICS, AND ANY OTHER MATERIALS WHICH ARE UNSUITABLE FOR PERENNIALS AND REQUIREMENTS OF PERENNIALS.

FINISH GRADE  
UNDISTURBED SOIL  
TO 12\"/>

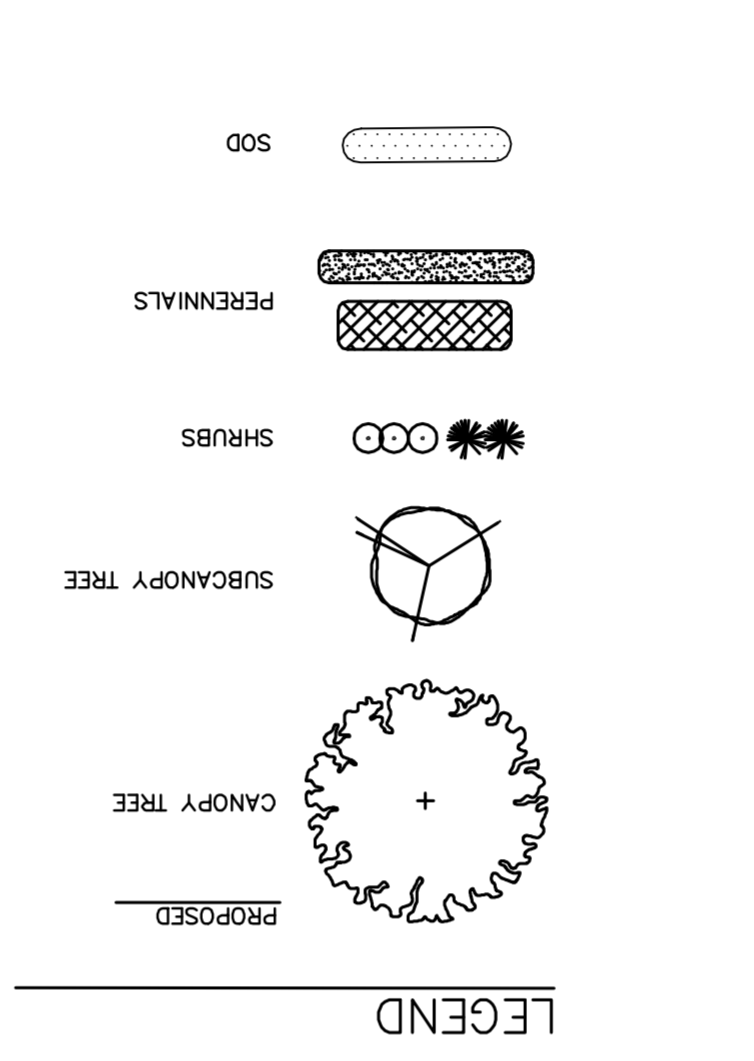


**SHRUB PLANTING DETAIL**  
NO SCALE

NOTES:  
1. DO NOT ALLOW AIR POCKETS TO FORM WHEN BACKFILLING.  
2. WATER SHRUB THOROUGHLY SUBSEQUENT TO INSTALLATION.  
3. DO NOT MAJAGE MAIN ROOTS OF SHRUBS TWO YEARS AFTER INSTALLATION.  
4. REMOVE TREE BRUSHES, TWIGS AND STAMPS FROM AREAS AFTER INSTALLATION.

DO NOT MAJAGE MAIN ROOTS OF SHRUBS TWO YEARS AFTER INSTALLATION.  
4. REMOVE TREE BRUSHES, TWIGS AND STAMPS FROM AREAS AFTER INSTALLATION.

FINISH GRADE  
UNDISTURBED SOIL  
GREAT SAUCER (MIN. 6\"/>

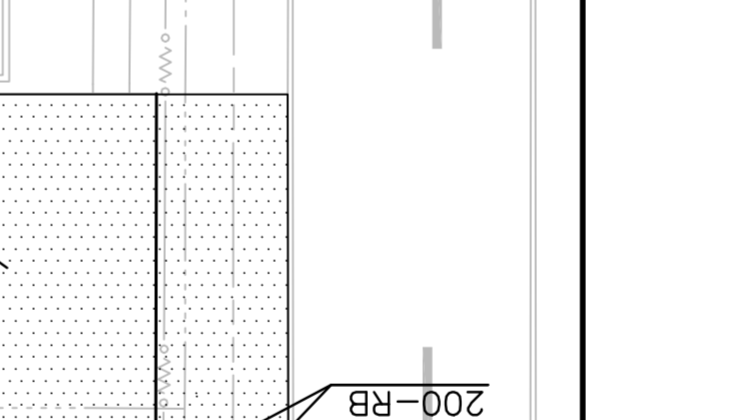


**DECIDUOUS TREE PLANTING DETAIL**  
NO SCALE

NOTES:  
1. DO NOT ALLOW AIR POCKETS TO FORM WHEN BACKFILLING.  
2. WATER PERENNIAL THOROUGHLY SUBSEQUENT TO INSTALLATION.  
3. DO NOT MAJAGE MAIN ROOTS OF DECIDUOUS TREE STAKE IN AN APPROXIMATE WAY ONLY AND HAVE NOT BEEN INDEPENDENTLY VERIFIED BY THE OWNER OR HIS REPRESENTATIVE. THE CONTRACTOR SHALL DETERMINE THE EXACT LOCATION OF ALL EXISTING UTILITIES BEFORE COMMENCING WORK, AND AGREES TO BE FULLY RESPONSIBLE FOR ANY AND ALL DAMAGES WHICH MIGHT BE OCCASIONED BY THE CONTRACTOR'S FAILURE TO EXACTLY LOCATE AND PRESERVE ANY AND ALL UNDERGROUND UTILITIES.

DO NOT ALLOW AIR POCKETS TO FORM WHEN BACKFILLING.  
2. WATER PERENNIAL THOROUGHLY SUBSEQUENT TO INSTALLATION.  
3. DO NOT MAJAGE MAIN ROOTS OF DECIDUOUS TREE STAKE IN AN APPROXIMATE WAY ONLY AND HAVE NOT BEEN INDEPENDENTLY VERIFIED BY THE OWNER OR HIS REPRESENTATIVE. THE CONTRACTOR SHALL DETERMINE THE EXACT LOCATION OF ALL EXISTING UTILITIES BEFORE COMMENCING WORK, AND AGREES TO BE FULLY RESPONSIBLE FOR ANY AND ALL DAMAGES WHICH MIGHT BE OCCASIONED BY THE CONTRACTOR'S FAILURE TO EXACTLY LOCATE AND PRESERVE ANY AND ALL UNDERGROUND UTILITIES.

FINISH GRADE  
UNDISTURBED SOIL  
GREAT SAUCER (MIN. 6\"/>



**LEGEND**

PROPOSED

CANOPY TREE

SUBCANOPY TREE

SHRUBS

PERENNIALS

SOD

**LANDSCAPE NOTES**

1. ALL PLANT MATERIAL SHALL BE LOCALLY NURSERY GROWN NO.1 GRADE AND INSTALLED ACCORDING TO ACCEPTED PLANTING PROCEDURES. ALL PLANT MATERIALS SHALL MEET CURRENT AMERICAN ASSOCIATION OF NURSERYMEN STANDARDS. DO NOT PLANT MATERIALS UNTIL DOUBLE STAMPS IN COMPLIANCE WITH CURRENT LOCAL ORDINANCES ARE RECEIVED.

2. SIZES SPECIFIED ARE MINIMUM SIZES TO WHICH THE PLANTS ARE TO BE INSTALLED. ANY PLANT SUBSTITUTION SHALL BE APPROVED BY THE MUNICIPALITY AND OWNER.

3. ALL LANDSCAPING SHALL BE INSTALLED AND MAINTAINED IN ACCORDANCE WITH MUNICIPAL ORDINANCES AND ACCEPTED NURSERY STANDARDS IN A NEAT, HEALTHY AND WEED FREE CONDITION. ANY DEAD, DISEASED OR DAMAGED PLANT MATERIALS ARE TO BE REPLACED IMMEDIATELY AFTER NOTIFIED TO DO SO. PLANT MATERIAL SHALL BE GUARANTEED FOR ONE YEAR AFTER PLANTING AND ACCEPTANCE.

4. DETAIL TREES AND SHRUBS IN ACCORDANCE WITH PLANTING DETAILS. DIG TREE PITS PER APPROX. 1/2 OF THE ROOT BALL ABOVE GRADE.

5. REMOVE ALL TWIGS, WIRE, NURSERY TREE GUARDERS, TAGS AND INORGANIC MATERIAL FROM ROOT BALLS. REMOVE THE TOP 1/3 OF BURLAP OR REMOVE BURLAP FROM ROOT BALLS.

6. ALL PLANTINGS AND PLANTING BEDS, MULCH PER PLANTING DETAILS. MULCH IN PLANT BEDS SHALL BE 3\"/>

**TOPSOIL AND SOD NOTES**

1. ALL DISTURBED AREAS SHALL RECEIVE SOD. SOD SHALL BE GROWN ON TOPSOIL UNLESS APPROVED OTHERWISE. SOD SHALL BE 2\"/>

2. SOD SHALL BE INSTALLED ON A MIN. OF 3\"/>

3. FINISH, FREE OF LUMPS AND DEPRESSIONS.

4. TOPSOIL SHALL BE FERTILE SOURCE, FREE OF STONKS 1/2 IN DIA. AND LARGER, ROOTS, STONKS, OR OTHER EXTENSIVE MATERIAL INCLUDING KNOWN TOXIC PLANTS. PH FINISH, FREE OF LUMPS AND DEPRESSIONS.

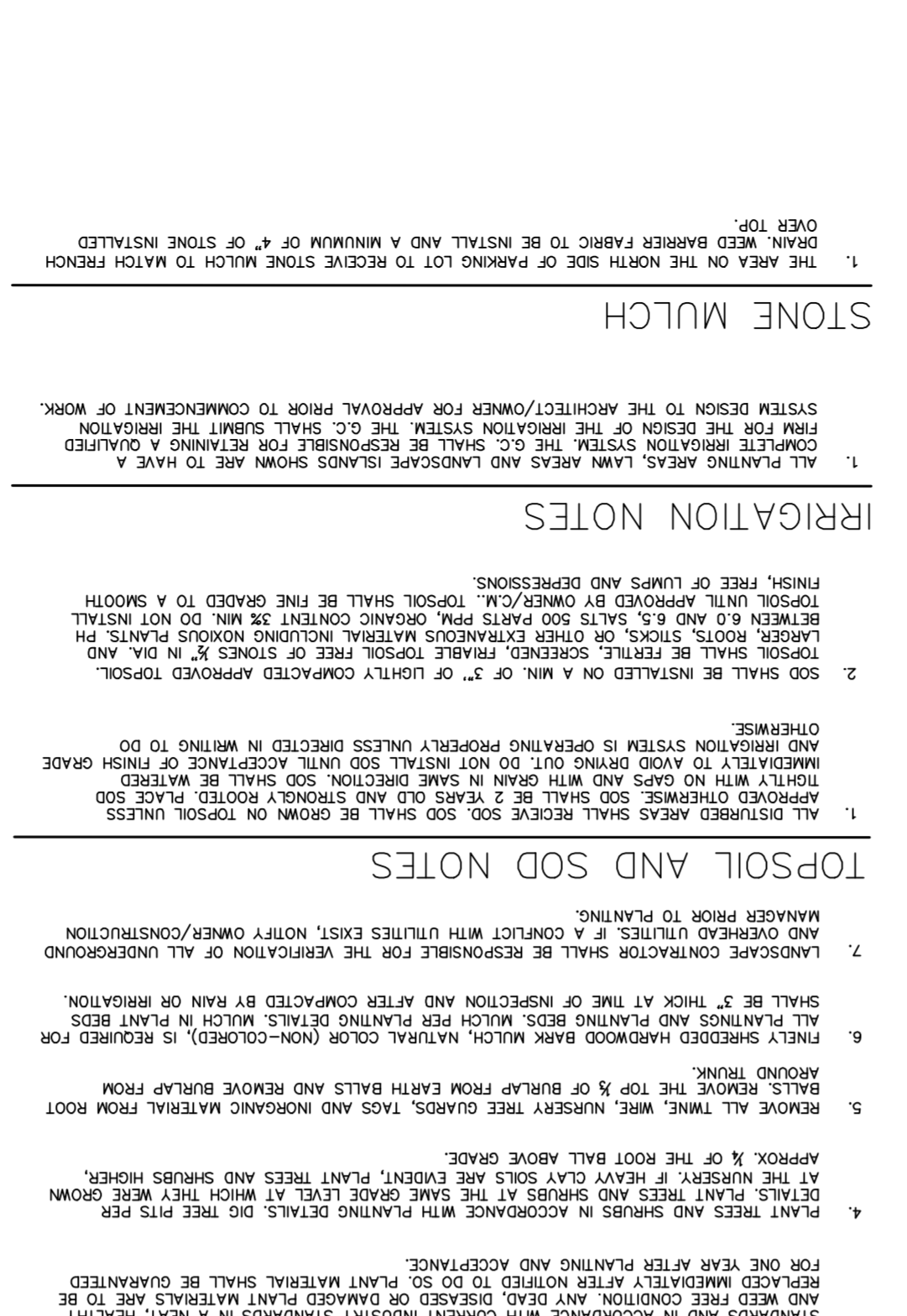
5. LANDSCAPE CONTRACTOR SHALL BE RESPONSIBLE FOR THE VERIFICATION OF ALL UNDERGROUND AND OVERHEAD UTILITIES. IF A CONFLICT WITH UTILITIES EXISTS, NOTIFY OWNER/CONSTRUCTION MANAGER PRIOR TO PLANTING.

6. IMMEDIATELY TO AVOID DRAINING OUT DO NOT INSTALL SOD UNTIL ACCEPTANCE OF FINISH GRADE OTHERWISE.

**IRRIGATION NOTES**

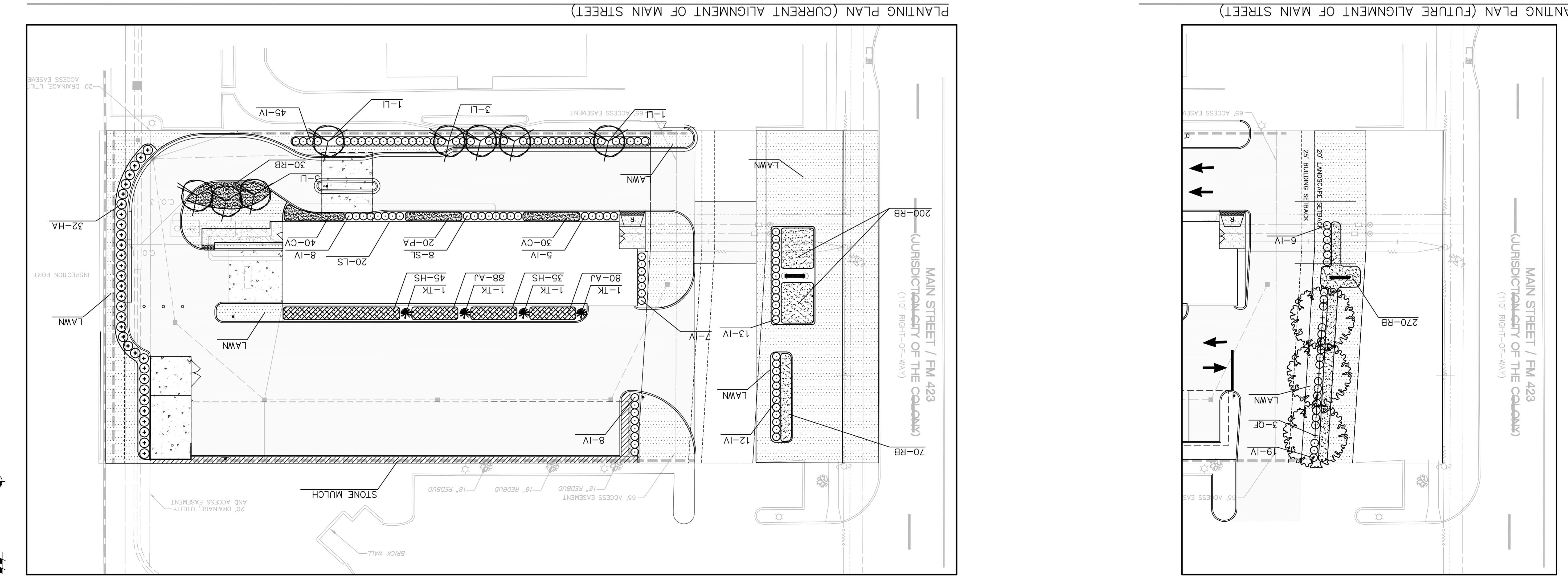
1. COMPLETE IRRIGATION SYSTEM THE C.C. SHALL BE RESPONSIBLE FOR RETAINING A QUALIFIED SYSTEM DESIGN TO THE ARCHITECT/OWNER FOR APPROVAL PRIOR TO COMMENCEMENT OF WORK. FROM THE DESIGN OF THE IRRIGATION SYSTEM, THE C.C. SHALL SUBMIT THE IRRIGATION OVERLAP.

2. THE AREA ON THE NORTH SIDE OF PARKING LOT TO RECEIVE STONE MULCH TO MATCH FRENCH DRAIN. WEED BARRIER FABRIC TO BE INSTALLED AND A MINIMUM OF 4\"/>



**STONE MULCH**

1. THE AREA ON THE NORTH SIDE OF PARKING LOT TO RECEIVE STONE MULCH TO MATCH FRENCH DRAIN. WEED BARRIER FABRIC TO BE INSTALLED AND A MINIMUM OF 4\"/>



**PLANTING SCHEDULE (The Colony, Texas)**

KEY	QUANT.	SPECIES	SIZE	SPEC.	NOTES
CP	(3)	Quercus fusiformis	3" col.	B&B	Spacing per diagram
UT	5	Lagerstroemia indica	2" col.	B&B	Spacing per diagram
CV	70	Coreopsis verticillata "Moonbeam"	No. 1	cont.	Spacing per diagram
HA	32	Hamelia patens	36" ht.	cont.	Spacing per diagram
IV	91	Ilex vomitoria "Nana"	24" ht.	cont.	Spacing per diagram
RB	270	Dwarf Mexican Holly	No. 1	cont.	Spacing per diagram
SL	8	Salvia leucantha	18" ht.	cont.	Spacing per diagram
PA	20	Russian Sage	No. 1	cont.	Spacing per diagram
TK	4	Thelypteris kunthii	No. 1	cont.	Spacing per diagram
GC	168	Alyca reptans	No. 1	cont.	Spacing per diagram
HS	80	Hauheuta sanguine	No. 1	cont.	Spacing per diagram
LS	20	Lonicera sempervirens	No. 1	cont.	Spacing per diagram
GT	20	Groundcovers			
UB	3	Understory Trees			
CP	3	Conopy Trees			

**LANDSCAPE REQUIREMENTS (The Colony, Texas)**

OVERLAP SITE LANDSCAPE: 20% Landscape, 26%

PARKING LOT LANDSCAPE: 14 proposed parking spaces, 60 square feet/1/2 spaces, 70 square feet

STREET TREES: 1 TREE PER 40' OF FRONTAGE, 130' Frontage

REVISIONS:

**LANDSCAPE REQUIREMENTS (The Colony, Texas)**

OVERLAP SITE LANDSCAPE: 20% Landscape, 26%

PARKING LOT LANDSCAPE: 14 proposed parking spaces, 60 square feet/1/2 spaces, 70 square feet

STREET TREES: 1 TREE PER 40' OF FRONTAGE, 130' Frontage

REVISIONS:

**LANDSCAPE REQUIREMENTS (The Colony, Texas)**

OVERLAP SITE LANDSCAPE: 20% Landscape, 26%

PARKING LOT LANDSCAPE: 14 proposed parking spaces, 60 square feet/1/2 spaces, 70 square feet

STREET TREES: 1 TREE PER 40' OF FRONTAGE, 130' Frontage

REVISIONS:

**LANDSCAPE REQUIREMENTS (The Colony, Texas)**

OVERLAP SITE LANDSCAPE: 20% Landscape, 26%

PARKING LOT LANDSCAPE: 14 proposed parking spaces, 60 square feet/1/2 spaces, 70 square feet

STREET TREES: 1 TREE PER 40' OF FRONTAGE, 130' Frontage

REVISIONS:

**LANDSCAPE REQUIREMENTS (The Colony, Texas)**

OVERLAP SITE LANDSCAPE: 20% Landscape, 26%

PARKING LOT LANDSCAPE: 14 proposed parking spaces, 60 square feet/1/2 spaces, 70 square feet

STREET TREES: 1 TREE PER 40' OF FRONTAGE, 130' Frontage

REVISIONS:

**LANDSCAPE REQUIREMENTS (The Colony, Texas)**

OVERLAP SITE LANDSCAPE: 20% Landscape, 26%

PARKING LOT LANDSCAPE: 14 proposed parking spaces, 60 square feet/1/2 spaces, 70 square feet

STREET TREES: 1 TREE PER 40' OF FRONTAGE, 130' Frontage

REVISIONS:

**LANDSCAPE REQUIREMENTS (The Colony, Texas)**

OVERLAP SITE LANDSCAPE: 20% Landscape, 26%

PARKING LOT LANDSCAPE: 14 proposed parking spaces, 60 square feet/1/2 spaces, 70 square feet

STREET TREES: 1 TREE PER 40' OF FRONTAGE, 130' Frontage

REVISIONS:

**LANDSCAPE REQUIREMENTS (The Colony, Texas)**

OVERLAP SITE LANDSCAPE: 20% Landscape, 26%

PARKING LOT LANDSCAPE: 14 proposed parking spaces, 60 square feet/1/2 spaces, 70 square feet

STREET TREES: 1 TREE PER 40' OF FRONTAGE, 130' Frontage

REVISIONS:

**LANDSCAPE REQUIREMENTS (The Colony, Texas)**

OVERLAP SITE LANDSCAPE: 20% Landscape, 26%

PARKING LOT LANDSCAPE: 14 proposed parking spaces, 60 square feet/1/2 spaces, 70 square feet

STREET TREES: 1 TREE PER 40' OF FRONTAGE, 130' Frontage

REVISIONS:

**LANDSCAPE REQUIREMENTS (The Colony, Texas)**

OVERLAP SITE LANDSCAPE: 20% Landscape, 26%

PARKING LOT LANDSCAPE: 14 proposed parking spaces, 60 square feet/1/2 spaces, 70 square feet

STREET TREES: 1 TREE PER 40' OF FRONTAGE, 130' Frontage

REVISIONS:

**LANDSCAPE REQUIREMENTS (The Colony, Texas)**

OVERLAP SITE LANDSCAPE: 20% Landscape, 26%

PARKING LOT LANDSCAPE: 14 proposed parking spaces, 60 square feet/1/2 spaces, 70 square feet

STREET TREES: 1 TREE PER 40' OF FRONTAGE, 130' Frontage

REVISIONS:

**LANDSCAPE REQUIREMENTS (The Colony, Texas)**

OVERLAP SITE LANDSCAPE: 20% Landscape, 26%

PARKING LOT LANDSCAPE: 14 proposed parking spaces, 60 square feet/1/2 spaces, 70 square feet

STREET TREES: 1 TREE PER 40' OF FRONTAGE, 130' Frontage

REVISIONS:

**LANDSCAPE REQUIREMENTS (The Colony, Texas)**

OVERLAP SITE LANDSCAPE: 20% Landscape, 26%

PARKING LOT LANDSCAPE: 14 proposed parking spaces, 60 square feet/1/2 spaces, 70 square feet

STREET TREES: 1 TREE PER 40' OF FRONTAGE, 130' Frontage

REVISIONS:

**LANDSCAPE REQUIREMENTS (The Colony, Texas)**

OVERLAP SITE LANDSCAPE: 20% Landscape, 26%

PARKING LOT LANDSCAPE: 14 proposed parking spaces, 60 square feet/1/2 spaces, 70 square feet

STREET TREES: 1 TREE PER 40' OF FRONTAGE, 130' Frontage

REVISIONS:

**LANDSCAPE REQUIREMENTS (The Colony, Texas)**

OVERLAP SITE LANDSCAPE: 20% Landscape, 26%

PARKING LOT LANDSCAPE: 14 proposed parking spaces, 60 square feet/1/2 spaces, 70 square feet

STREET TREES: 1 TREE PER 40' OF FRONTAGE, 130' Frontage

REVISIONS:

**LANDSCAPE REQUIREMENTS (The Colony, Texas)**

OVERLAP SITE LANDSCAPE: 20% Landscape, 26%

PARKING LOT LANDSCAPE: 14 proposed parking spaces, 60 square feet/1/2 spaces, 70 square feet

STREET TREES: 1 TREE PER 40' OF FRONTAGE, 130' Frontage

REVISIONS:

**LANDSCAPE REQUIREMENTS (The Colony, Texas)**

OVERLAP SITE LANDSCAPE: 20% Landscape, 26%

PARKING LOT LANDSCAPE: 14 proposed parking spaces, 60 square feet/1/2 spaces, 70 square feet

STREET TREES: 1 TREE PER 40' OF FRONTAGE, 130' Frontage

REVISIONS:

**LANDSCAPE REQUIREMENTS (The Colony, Texas)**

OVERLAP SITE LANDSCAPE: 20% Landscape, 26%

PARKING LOT LANDSCAPE: 14 proposed parking spaces, 60 square feet/1/2 spaces, 70 square feet

STREET TREES: 1 TREE PER 40' OF FRONTAGE, 130' Frontage

REVISIONS:

**LANDSCAPE REQUIREMENTS (The Colony, Texas)**

OVERLAP SITE LANDSCAPE: 20% Landscape, 26%

PARKING LOT LANDSCAPE: 14 proposed parking spaces, 60 square feet/1/2 spaces, 70 square feet

STREET TREES: 1 TREE PER 40' OF FRONTAGE, 130' Frontage

REVISIONS:

**LANDSCAPE REQUIREMENTS (The Colony, Texas)**

OVERLAP SITE LANDSCAPE: 20% Landscape, 26%

PARKING LOT LANDSCAPE: 14 proposed parking spaces, 60 square feet/1/2 spaces, 70 square feet

STREET TREES: 1 TREE PER 40' OF FRONTAGE, 130' Frontage

REVISIONS:

**LANDSCAPE REQUIREMENTS (The Colony, Texas)**

OVERLAP SITE LANDSCAPE: 20% Landscape, 26%

PARKING LOT LANDSCAPE: 14 proposed parking spaces, 60 square feet/1/2 spaces, 70 square feet

STREET TREES: 1 TREE PER 40' OF FRONTAGE, 130' Frontage

REVISIONS:

**LANDSCAPE REQUIREMENTS (The Colony, Texas)**

OVERLAP SITE LANDSCAPE: 20% Landscape, 26%

PARKING LOT LANDSCAPE: 14 proposed parking spaces, 60 square feet/1/2 spaces, 70 square feet

STREET TREES: 1 TREE PER 40' OF FRONTAGE, 130' Frontage

REVISIONS:

**LANDSCAPE REQUIREMENTS (The Colony, Texas)**

OVERLAP SITE LANDSCAPE: 20% Landscape, 26%

PARKING LOT LANDSCAPE: 14 proposed parking spaces, 60 square feet/1/2 spaces, 70 square feet

STREET TREES: 1 TREE PER 40' OF FRONTAGE, 130' Frontage

REVISIONS:

**LANDSCAPE REQUIREMENTS (The Colony, Texas)**

OVERLAP SITE LANDSCAPE: 20% Landscape, 26%

PARKING LOT LANDSCAPE: 14 proposed parking spaces, 60 square feet/1/2 spaces, 70 square feet

STREET TREES: 1 TREE PER 40' OF FRONTAGE, 130' Frontage

REVISIONS:

**LANDSCAPE REQUIREMENTS (The Colony, Texas)**

OVERLAP SITE LANDSCAPE: 20% Landscape, 26%

PARKING LOT LANDSCAPE: 14 proposed parking spaces, 60 square feet/1/2 spaces, 70 square feet

STREET TREES: 1 TREE PER 40' OF FRONTAGE, 130' Frontage

REVISIONS:

**LANDSCAPE REQUIREMENTS (The Colony, Texas)**

OVERLAP SITE LANDSCAPE: 20% Landscape, 26%

PARKING LOT LANDSCAPE: 14 proposed parking spaces, 60 square feet/1/2 spaces, 70 square feet

STREET TREES: 1 TREE PER 40' OF FRONTAGE, 130' Frontage

REVISIONS:

**LANDSCAPE REQUIREMENTS (The Colony, Texas)**

OVERLAP SITE LANDSCAPE: 20% Landscape, 26%

PARKING LOT LANDSCAPE: 14 proposed parking spaces, 60 square feet/1/2 spaces, 70 square feet

STREET TREES: 1 TREE PER 40' OF FRONTAGE, 130' Frontage

REVISIONS:

**LANDSCAPE REQUIREMENTS (The Colony, Texas)**

OVERLAP SITE LANDSCAPE: 20% Landscape, 26%

PARKING LOT LANDSCAPE: 14 proposed parking spaces, 60 square feet/1/2 spaces, 70 square feet

STREET TREES: 1 TREE PER 40' OF FRONTAGE, 130' Frontage

REVISIONS:

**LANDSCAPE REQUIREMENTS (The Colony, Texas)**

OVERLAP SITE LANDSCAPE: 20% Landscape, 26%

PARKING LOT LANDSCAPE: 14 proposed parking spaces, 60 square feet/1/2 spaces, 70 square feet

STREET TREES: 1 TREE PER 40' OF FRONTAGE, 130' Frontage

REVISIONS:

**LANDSCAPE REQUIREMENTS (The Colony, Texas)**

OVERLAP SITE LANDSCAPE: 20% Landscape, 26%

PARKING LOT LANDSCAPE: 14 proposed parking spaces, 60 square feet/1/2 spaces, 70 square feet

STREET TREES: 1 TREE PER 40' OF FRONTAGE, 130' Frontage

REVISIONS:

**LANDSCAPE REQUIREMENTS (The Colony, Texas)**

OVERLAP SITE LANDSCAPE: 20% Landscape, 26%

PARKING LOT LANDSCAPE: 14 proposed parking spaces, 60 square feet/1/2 spaces, 70 square feet

STREET TREES: 1 TREE PER 40' OF FRONTAGE, 130' Frontage

REVISIONS:

**LANDSCAPE REQUIREMENTS (The Colony, Texas)**

OVERLAP SITE LANDSCAPE: 20% Landscape, 26%

PARKING LOT LANDSCAPE: 14 proposed parking spaces, 60 square feet/1/2 spaces, 70 square feet

STREET TREES: 1 TREE PER 40' OF FRONTAGE, 130' Frontage

REVISIONS:

**LANDSCAPE REQUIREMENTS (The Colony, Texas)**

OVERLAP SITE LANDSCAPE: 20% Landscape, 26%

PARKING LOT LANDSCAPE: 14 proposed parking spaces, 60 square feet/1/2 spaces, 70 square feet

STREET TREES: 1 TREE PER 40' OF FRONTAGE, 130' Frontage

REVISIONS:

**LANDSCAPE REQUIREMENTS (The Colony, Texas)**

OVERLAP SITE LANDSCAPE: 20% Landscape, 26%

PARKING LOT LANDSCAPE: 14 proposed parking spaces, 60 square feet/1/2 spaces, 70 square feet

STREET TREES: 1 TREE PER 40' OF FRONTAGE, 130' Frontage

REVISIONS:

**LANDSCAPE REQUIREMENTS (The Colony, Texas)**

OVERLAP SITE LANDSCAPE: 20% Landscape, 26%

PARKING LOT LANDSCAPE: 14 proposed parking spaces, 60 square feet/1/2 spaces, 70 square feet

STREET TREES: 1 TREE PER 40' OF FRONTAGE, 130' Frontage

REVISIONS:

**LANDSCAPE REQUIREMENTS (The Colony, Texas)**

OVERLAP SITE LANDSCAPE: 20% Landscape, 26%

PARKING LOT LANDSCAPE: 14 proposed parking spaces, 60 square feet/1/2 spaces, 70 square feet

STREET TREES: 1 TREE PER 40' OF FRONTAGE, 130' Frontage

REVISIONS:

**LANDSCAPE REQUIREMENTS (The Colony, Texas)**

OVERLAP SITE LANDSCAPE: 20% Landscape, 26%

PARKING LOT LANDSCAPE: 14 proposed parking spaces, 60 square feet/1/2 spaces, 70 square feet

STREET TREES: 1 TREE PER 40' OF FRONTAGE, 130' Frontage

REVISIONS:

**LANDSCAPE REQUIREMENTS (The Colony, Texas)**

OVERLAP SITE LANDSCAPE: 20% Landscape, 26%

PARKING LOT LANDSCAPE: 14 proposed parking spaces, 60 square feet/1/2 spaces, 70 square feet

STREET TREES: 1 TREE PER 40' OF FRONTAGE, 130' Frontage

REVISIONS:

**LANDSCAPE REQUIREMENTS (The Colony, Texas)**

OVERLAP SITE LANDSCAPE: 20% Landscape, 26%

PARKING LOT LANDSCAPE: 14 proposed parking spaces, 60 square feet/1/2 spaces, 70 square feet

STREET TREES: 1 TREE PER 40' OF FRONTAGE, 130' Frontage

REVISIONS:

**LANDSCAPE REQUIREMENTS (The Colony, Texas)**

OVERLAP SITE LANDSCAPE: 20% Landscape, 26%

PARKING LOT LANDSCAPE: 14 proposed parking spaces, 60 square feet/1/2 spaces, 70 square feet

STREET TREES: 1 TREE PER 40' OF FRONTAGE, 130' Frontage

REVISIONS:

**LANDSCAPE REQUIREMENTS (The Colony, Texas)**

OVERLAP SITE LANDSCAPE: 20% Landscape, 26%

PARKING LOT LANDSCAPE: 14 proposed parking spaces, 60 square feet/1/2 spaces, 70 square feet

STREET TREES: 1 TREE PER 40' OF FRONTAGE, 130' Frontage

REVISIONS:

**LANDSCAPE REQUIREMENTS (The Colony, Texas)**

OVERLAP SITE LANDSCAPE: 20% Landscape, 26%

PARKING LOT LANDSCAPE: 14 proposed parking spaces, 60 square feet/1/2 spaces, 70 square feet

STREET TREES: 1 TREE PER 40' OF FRONTAGE, 130' Frontage

REVISIONS:

**LANDSCAPE REQUIREMENTS (The Colony, Texas)**

OVERLAP SITE LANDSCAPE: 20% Landscape, 26%

PARKING LOT LANDSCAPE: 14 proposed parking spaces, 60 square feet/1/2 spaces, 70 square feet

STREET TREES: 1 TREE PER 40' OF FRONTAGE, 130' Frontage

REVISIONS:

**LANDSCAPE REQUIREMENTS (The Colony, Texas)**

OVERLAP SITE LANDSCAPE: 20% Landscape, 26%

PARKING LOT LANDSCAPE: 14 proposed parking spaces, 60 square feet/1/2 spaces, 70 square feet

STREET TREES: 1 TREE PER 40' OF FRONTAGE, 130' Frontage

REVISIONS:

**LANDSCAPE REQUIREMENTS (The Colony, Texas)**

OVERLAP SITE LANDSCAPE: 20% Landscape, 26%

PARKING LOT LANDSCAPE: 14 proposed parking spaces, 60 square feet/1/2 spaces, 70 square feet

STREET TREES: 1 TREE PER 40' OF FRONTAGE, 130' Frontage

REVISIONS:

**LANDSCAPE REQUIREMENTS (The Colony, Texas)**

OVERLAP SITE LANDSCAPE: 20% Landscape, 26%

PARKING LOT LANDSCAPE: 14 proposed parking spaces, 60 square feet/1/2 spaces, 70 square feet

STREET TREES: 1 TREE PER 40' OF FRONTAGE, 130' Frontage

REVISIONS:

**LANDSCAPE REQUIREMENTS (The Colony, Texas)**

OVERLAP SITE LANDSCAPE: 20% Landscape, 26%

PARKING LOT LANDSCAPE: 14 proposed parking spaces, 60 square feet/1/2 spaces, 70 square feet

STREET TREES: 1 TREE PER 40' OF FRONTAGE, 130' Frontage

REVISIONS:

**LANDSCAPE REQUIREMENTS (The Colony, Texas)**

OVERLAP SITE LANDSCAPE: 20% Landscape, 26%

PARKING LOT LANDSCAPE: 14 proposed parking spaces, 60 square feet/1/2 spaces, 70 square feet

STREET TREES: 1 TREE PER 40' OF FRONTAGE, 130' Frontage

REVISIONS:

**LANDSCAPE REQUIREMENTS (The Colony, Texas)**

OVERLAP SITE LANDSCAPE: 20% Landscape, 26%

PARKING LOT LANDSCAPE: 14 proposed parking spaces, 60 square feet/1/2 spaces, 70 square feet

STREET TREES: 1 TREE PER 40' OF FRONTAGE, 130' Frontage

REVISIONS:

**LANDSCAPE REQUIREMENTS (The Colony, Texas)**

OVERLAP SITE LANDSCAPE: 20% Landscape, 26%

PARKING LOT LANDSCAPE: 14 proposed parking spaces, 60 square feet/1/2 spaces, 70 square feet

STREET TREES: 1 TREE PER 40' OF FRONTAGE, 130' Frontage

REVISIONS:

**LANDSCAPE REQUIREMENTS (The Colony, Texas)**

OVERLAP SITE LANDSCAPE: 20% Landscape, 26%

PARKING LOT LANDSCAPE: 14 proposed parking spaces, 60 square feet/1/2 spaces, 70 square feet

STREET TREES: 1 TREE PER 40' OF FRONTAGE, 130' Frontage

REVISIONS:

**LANDSCAPE REQUIREMENTS (The Colony, Texas)**

OVERLAP SITE LANDSCAPE: 20% Landscape, 26%

PARKING LOT LANDSCAPE: 14 proposed parking spaces, 60 square feet/1/2 spaces, 70 square feet

STREET TREES: 1 TREE PER 40' OF FRONTAGE, 130' Frontage

REVISIONS:

**LANDSCAPE REQUIREMENTS (The Colony, Texas)**

OVERLAP SITE LANDSCAPE: 20% Landscape, 26%

PARKING LOT LANDSCAPE: 14 proposed parking spaces, 60 square feet/1/2 spaces, 70 square feet

STREET TREES: 1 TREE PER 40' OF FRONTAGE, 130' Frontage

REVISIONS:

**LANDSCAPE REQUIREMENTS (The Colony, Texas)**

OVERLAP SITE LANDSCAPE: 20% Landscape, 26%

PARKING LOT LANDSCAPE: 14 proposed parking spaces, 60 square feet/1/2 spaces, 70 square feet

STREET TREES: 1 TREE PER 40' OF FRONTAGE, 130' Frontage

REVISIONS:

**LANDSCAPE REQUIREMENTS (The Colony, Texas)**

OVERLAP SITE LANDSCAPE: 20% Landscape, 26%

PARKING LOT LANDSCAPE: 14 proposed parking spaces, 60 square feet/1/2 spaces, 70 square feet

STREET TREES: 1 TREE PER 40' OF FRONTAGE, 130' Frontage

REVISIONS:

**LANDSCAPE REQUIREMENTS (The Colony, Texas)**

OVERLAP SITE LANDSCAPE: 20% Landscape, 26%

PARKING LOT LANDSCAPE: 14 proposed parking spaces, 60 square feet/1/2 spaces, 70 square feet

STREET TREES: 1 TREE PER 40' OF FRONTAGE, 130' Frontage

REVISIONS:

**LANDSCAPE REQUIREMENTS (The Colony, Texas)**

OVERLAP SITE LANDSCAPE: 20% Landscape, 26%

PARKING LOT LANDSCAPE: 14 proposed parking spaces, 60 square feet/1/2 spaces, 70 square feet

STREET TREES: 1 TREE PER 40' OF FRONTAGE, 130' Frontage

REVISIONS:

**LANDSCAPE REQUIREMENTS (The Colony, Texas)**

OVERLAP SITE LANDSCAPE: 20% Landscape, 26%

PARKING LOT LANDSCAPE: 14 proposed parking spaces, 60 square feet/1/2 spaces, 70 square feet

STREET TREES: 1 TREE PER 40' OF FRONTAGE, 130' Frontage

REVISIONS:

**LANDSCAPE REQUIREMENTS (The Colony, Texas)**

OVERLAP SITE LANDSCAPE: 20% Landscape, 26%

PARKING LOT LANDSCAPE: 14 proposed parking spaces, 60 square feet/1/2 spaces, 70 square feet

STREET TREES: 1 TREE PER 40' OF FRONTAGE, 130' Frontage

REVISIONS:

**LANDSCAPE REQUIREMENTS (The Colony, Texas)**

OVERLAP SITE LANDSCAPE: 20% Landscape, 26%

PARKING LOT LANDSCAPE: 14 proposed parking spaces, 60 square feet/1/2 spaces, 70 square feet

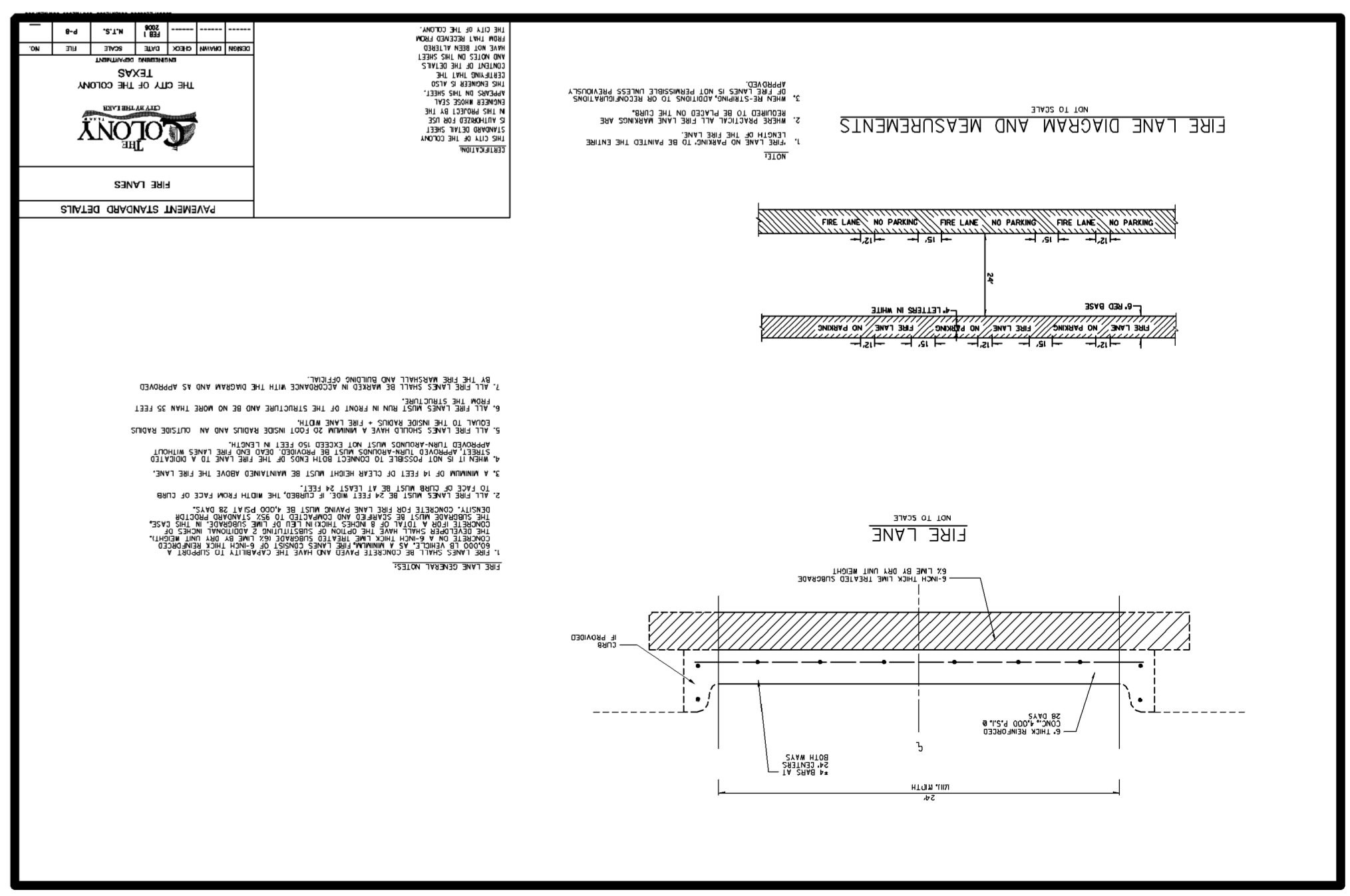
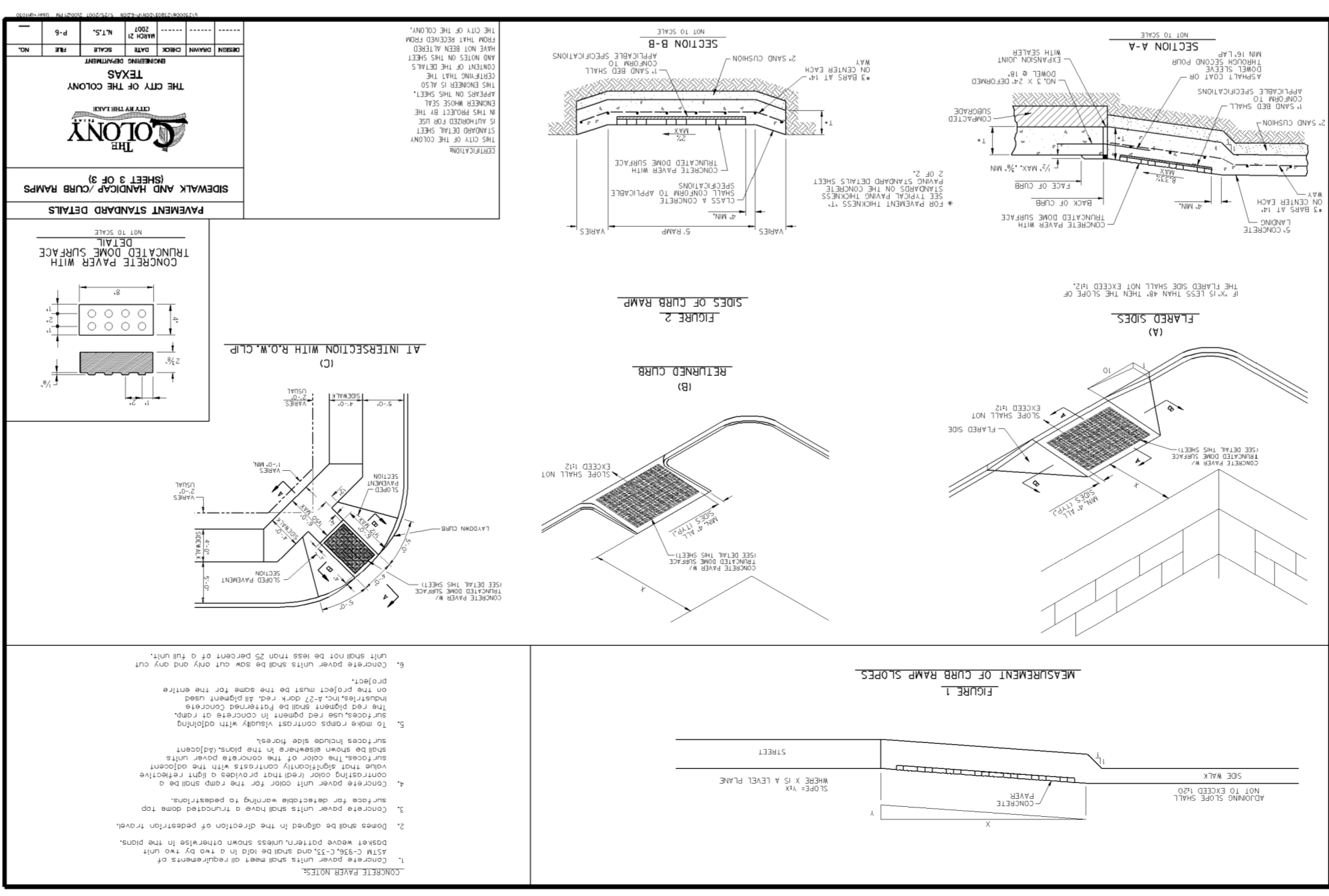
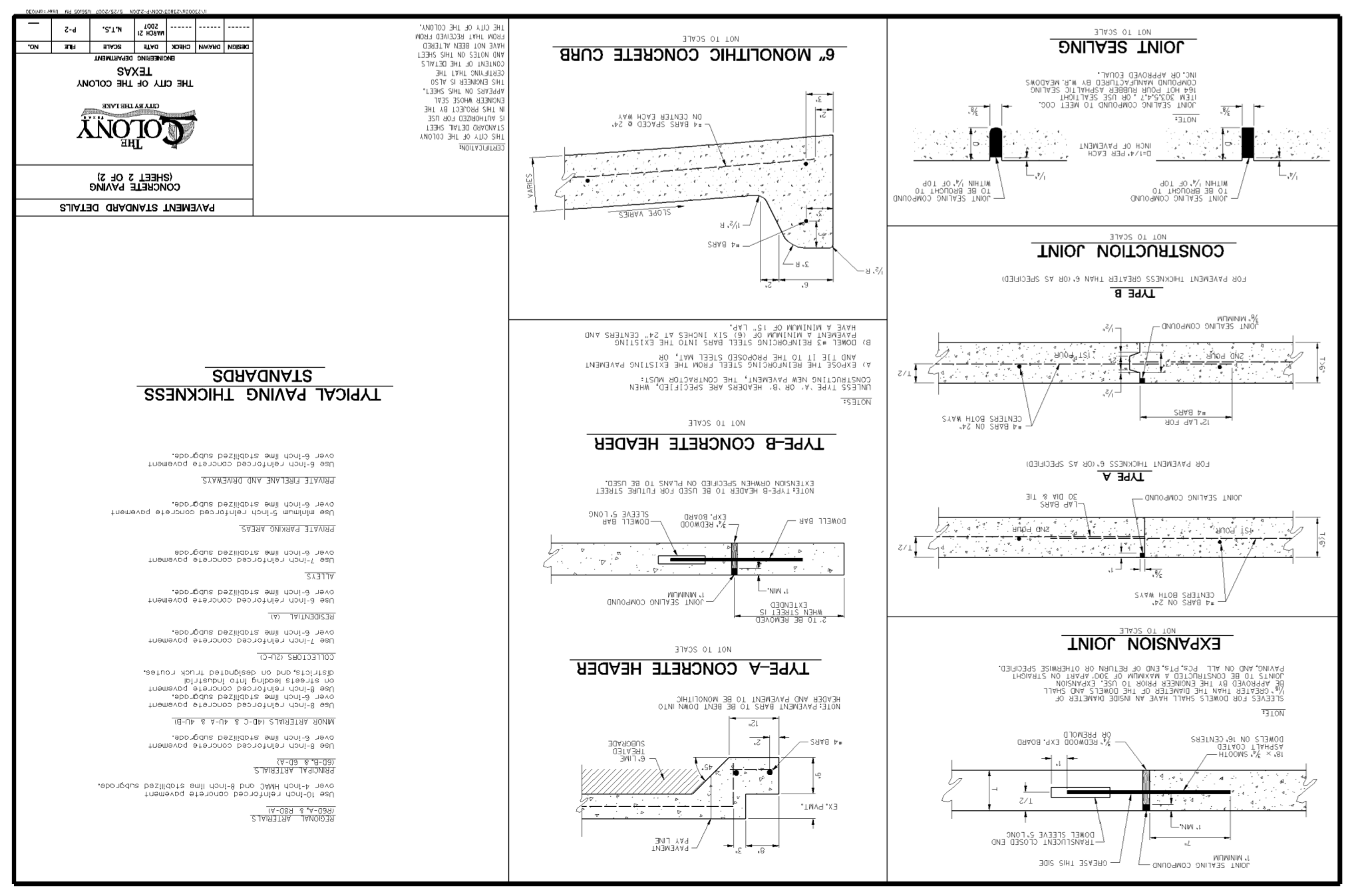
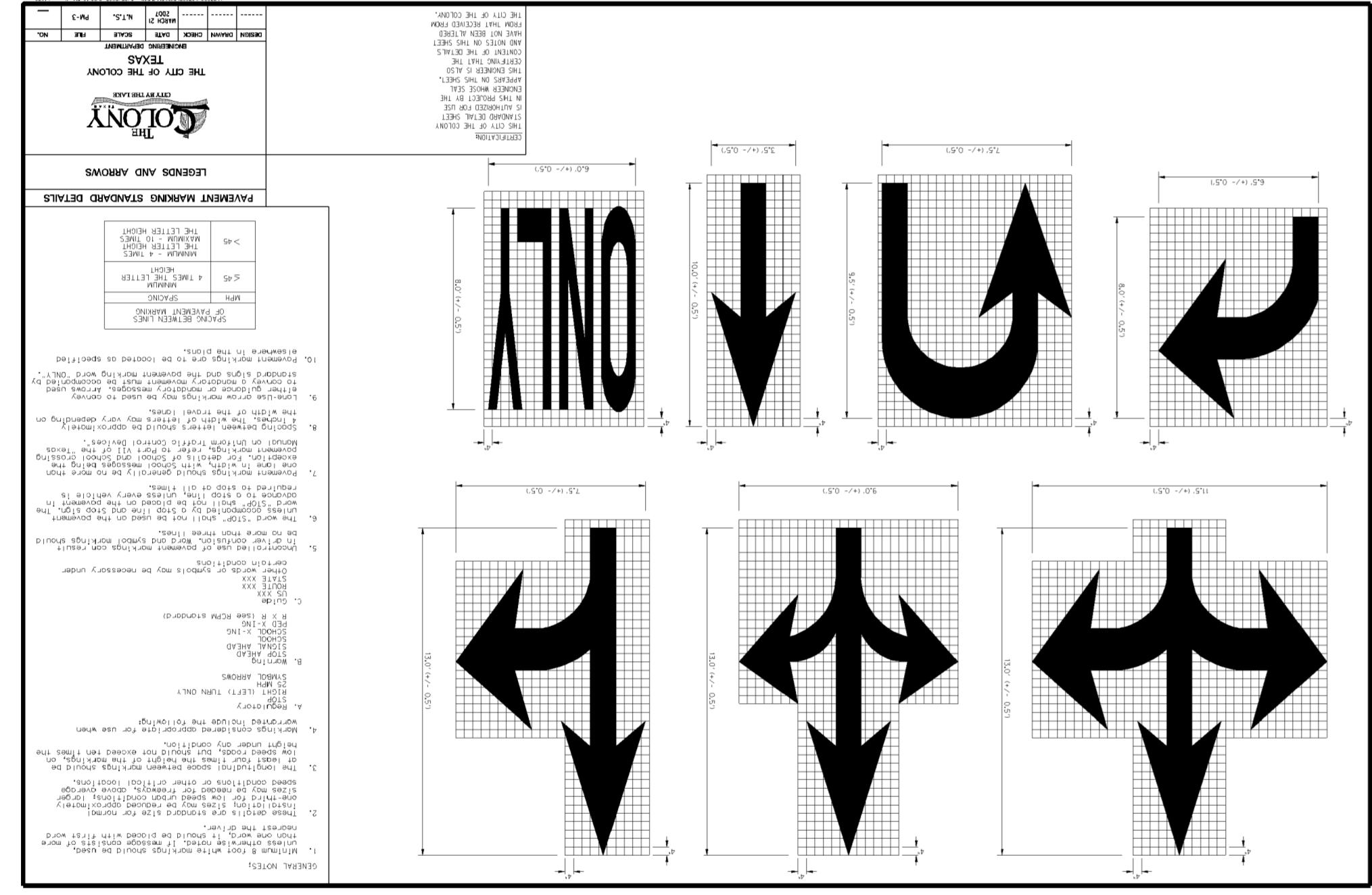
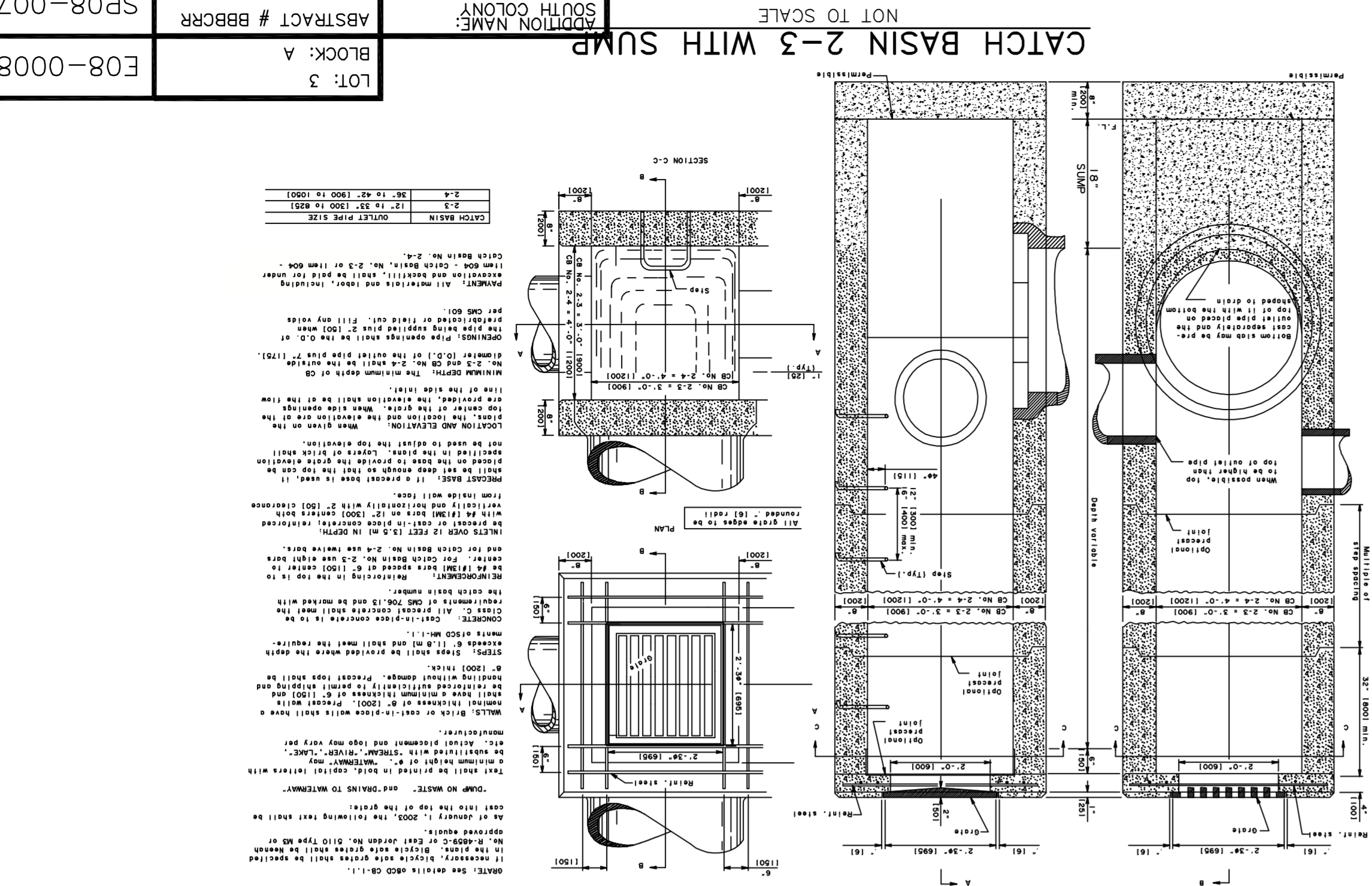
STREET TRE

**NOTICE:**  
 CONSTRUCTION SITE SAFETY IS THE SOLE RESPONSIBILITY OF THE CONTRACTOR. NEITHER THE OWNER NOR THE ENGINEER SHALL BE EXPECTED TO ASSUME ANY RESPONSIBILITY FOR ANY NEARBY STRUCTURES, OR OF ANY OTHER PERSONS, OCCASIONED BY THE CONTRACTOR'S FAILURE TO EXACTLY LOCATE AND PRESERVE ANY AND ALL UNDERGROUND UTILITIES.  
 THE LOCATION OF EXISTING UNDERGROUND UTILITIES ARE SHOWN IN AN APPROXIMATE WAY ONLY AND HAVE NOT BEEN INDEPENDENTLY VERIFIED BY THE OWNER OR HIS REPRESENTATIVE. THE CONTRACTOR SHALL DETERMINE THE EXACT LOCATION OF ALL EXISTING UTILITIES BEFORE COMMENCING WORK, AND AGREES TO BE FULLY RESPONSIBLE FOR ANY AND ALL DAMAGES WHICH MIGHT BE INCURRED BY THE CONTRACTOR'S FAILURE TO EXACTLY LOCATE AND PRESERVE ANY AND ALL UNDERGROUND UTILITIES.  
 NO REPRODUCTION SHALL BE MADE WITHOUT THE WRITTEN CONSENT OF ATWELL-HICKS  
 COPYRIGHT © ATWELL-HICKS



**811** Know what's below.  
 Call before you dig.

NOTE RETAINING CURB:  
 DETAIL UNDER DESIGN BY STRUCTURAL AND GEOTECHNICAL ENGINEER  
 CALCULATIONS/DESIGN WILL BE SUBMITTED WHEN RECEIVED



SCALE: NOT TO SCALE  
 P.M. J. LAUELERE  
 BOOK (BY OTHERS)  
 CAD FILE: 08002180C-09-DT  
 JOB: 08002180  
 FILE CODE: 08002180C  
 SHEET NO. SP08-007

CLIENT: VC-CAPITAL, LLC.  
 THE PIPELINE AUTO SPA  
 CONSTRUCTION PLANS  
 MISCELLANEOUS DETAIL SHEET

4906 MAIN STREET  
 THE COLONY  
 DENTON COUNTY, TEXAS

**ATWELL-HICKS**  
 www.atwell-hicks.com  
 Environmental  
 Ecological  
 Water Resources  
 Planning  
 Surveying  
 Engineering  
 ARIZONA FLORIDA ILLINOIS MICHIGAN  
 OHIO PENNSYLVANIA TENNESSEE  
 8 6 6 8 5 0 4 2 0 0

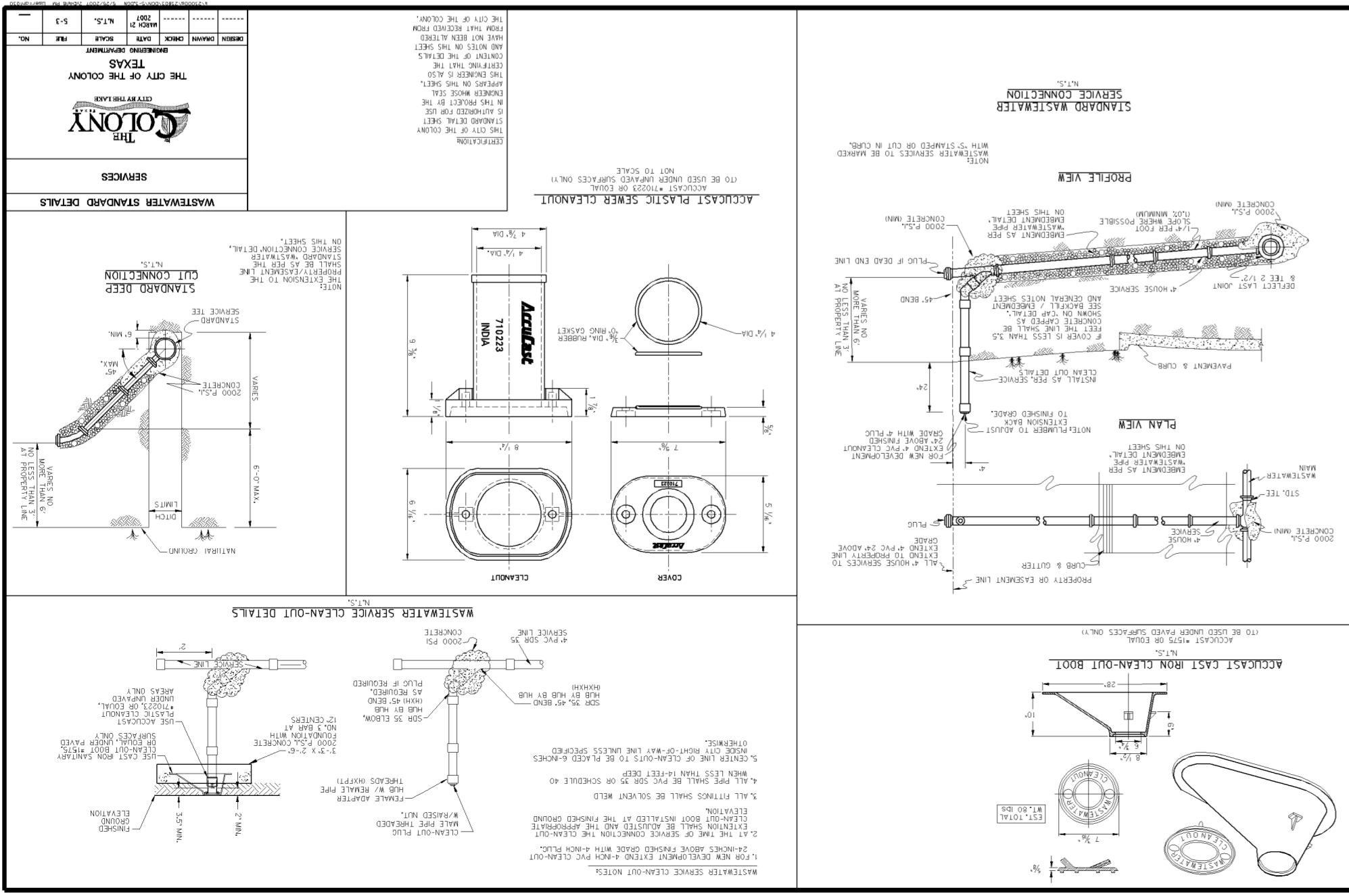
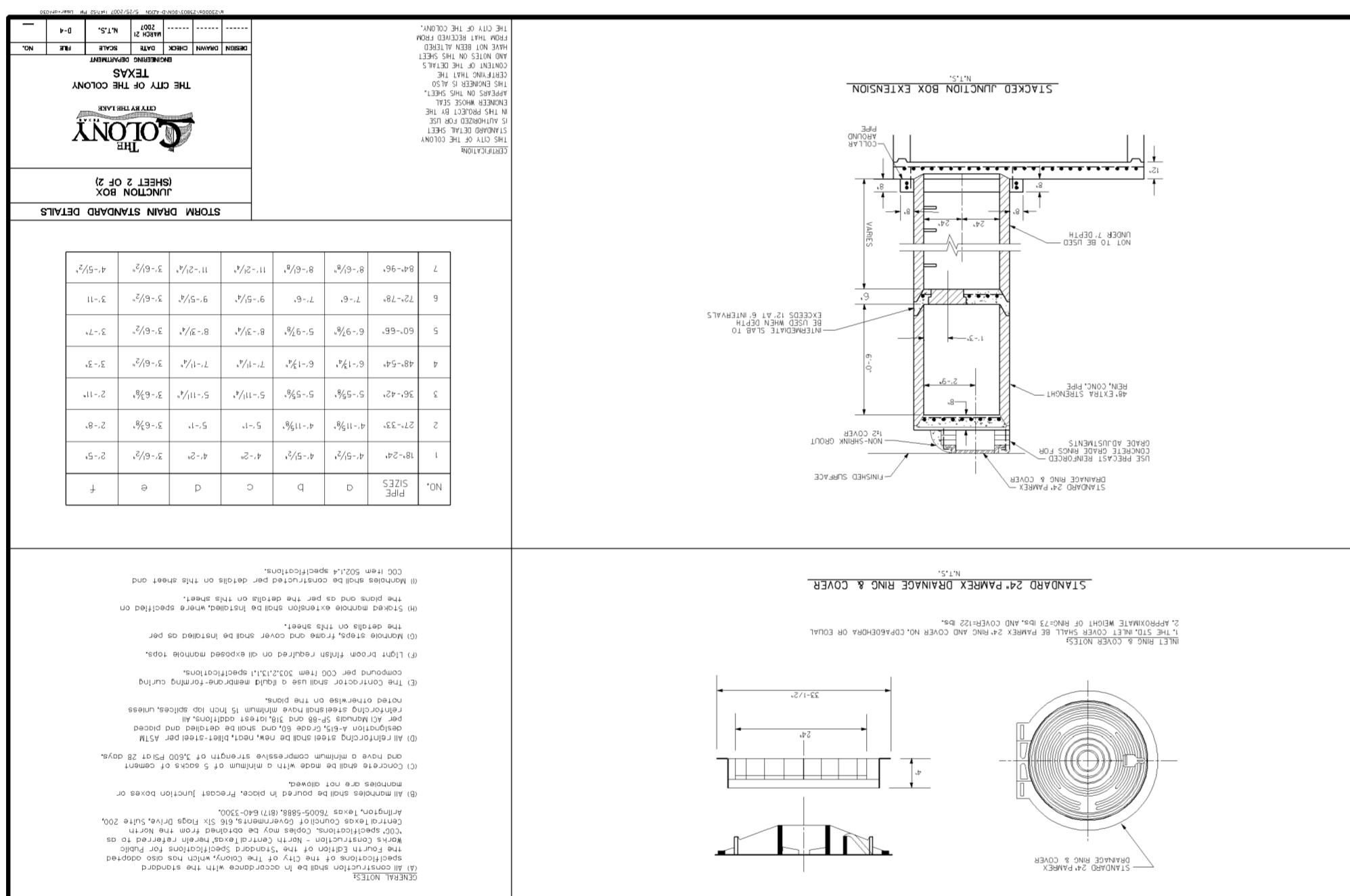
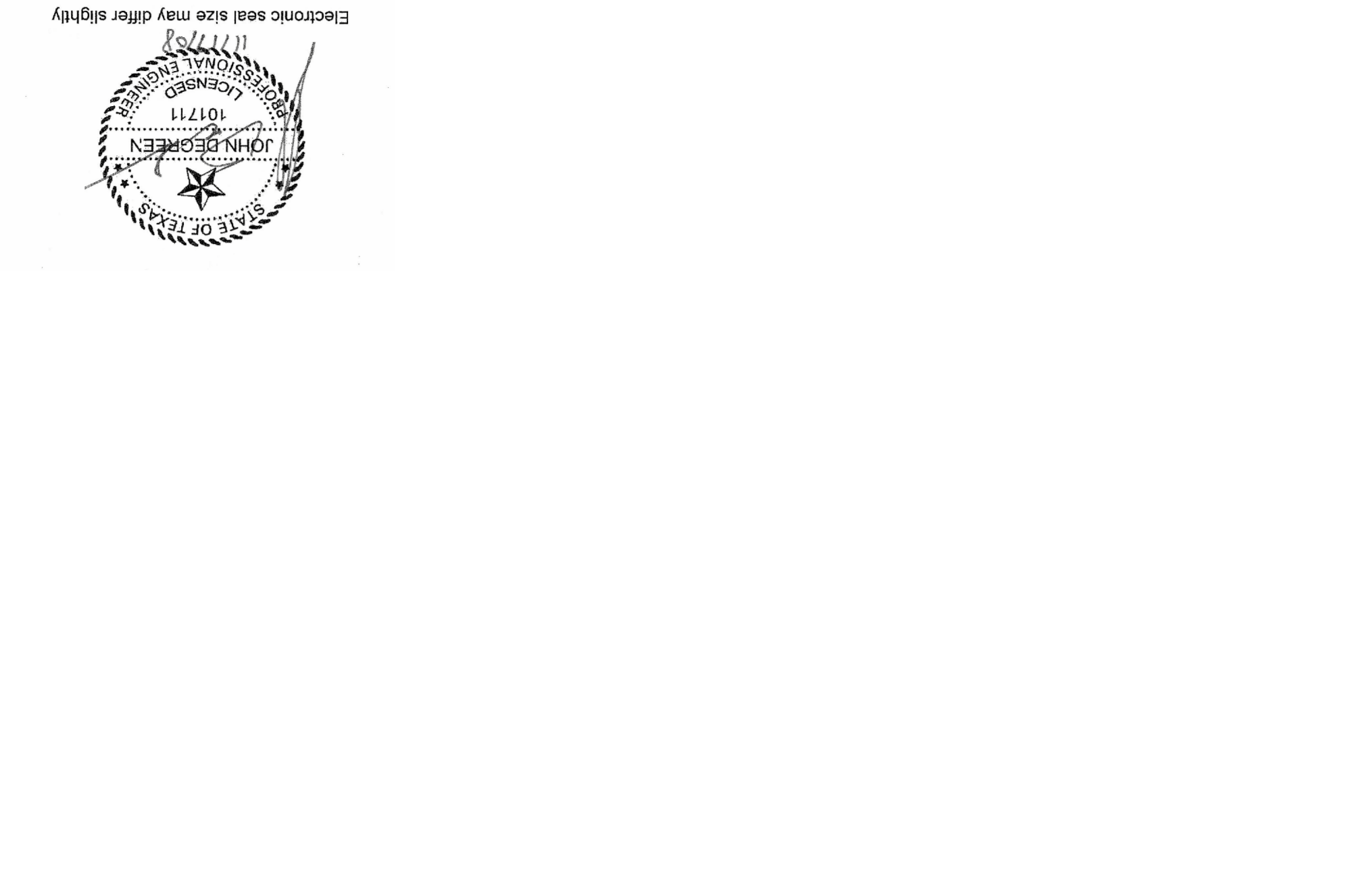
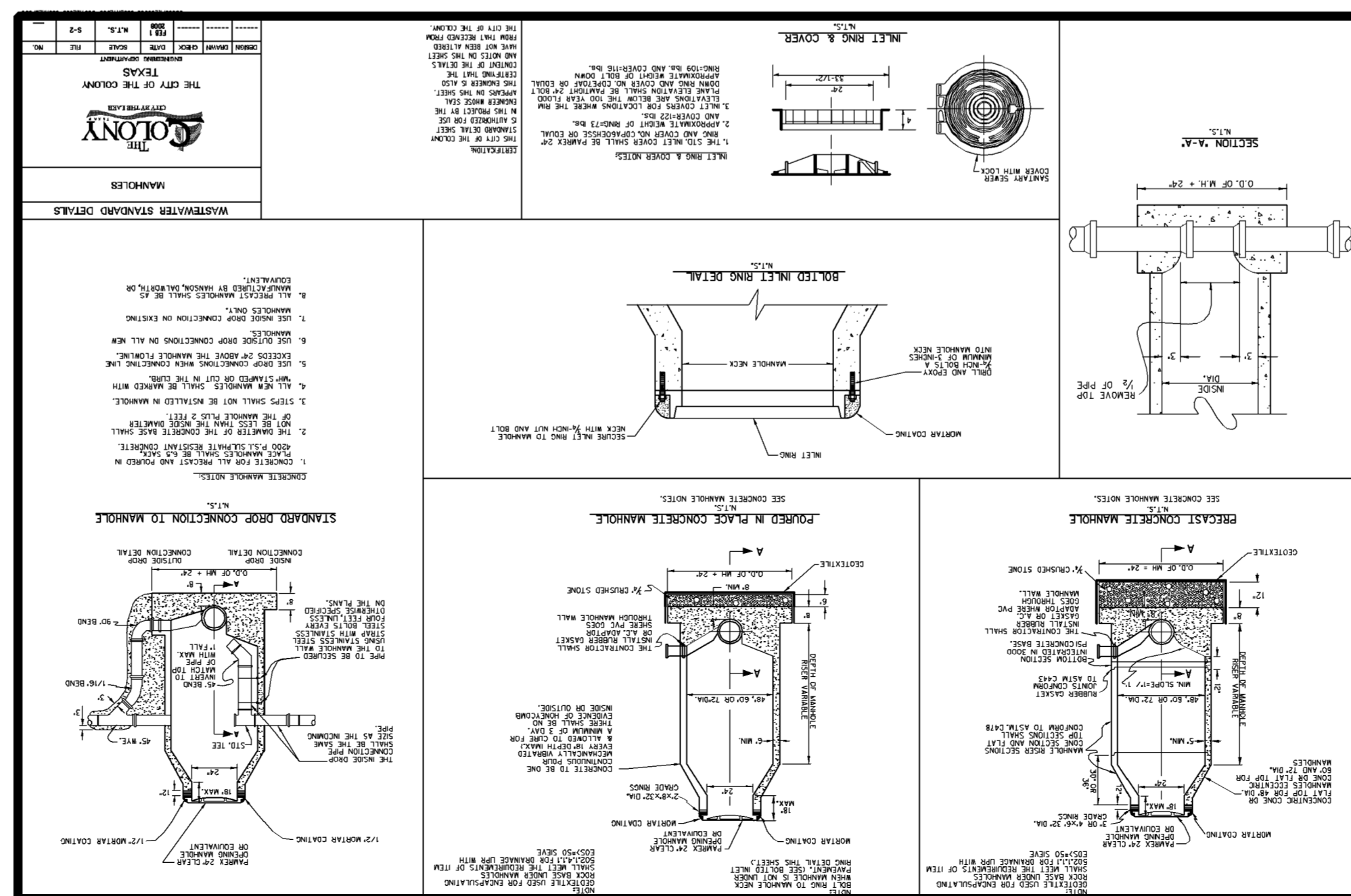
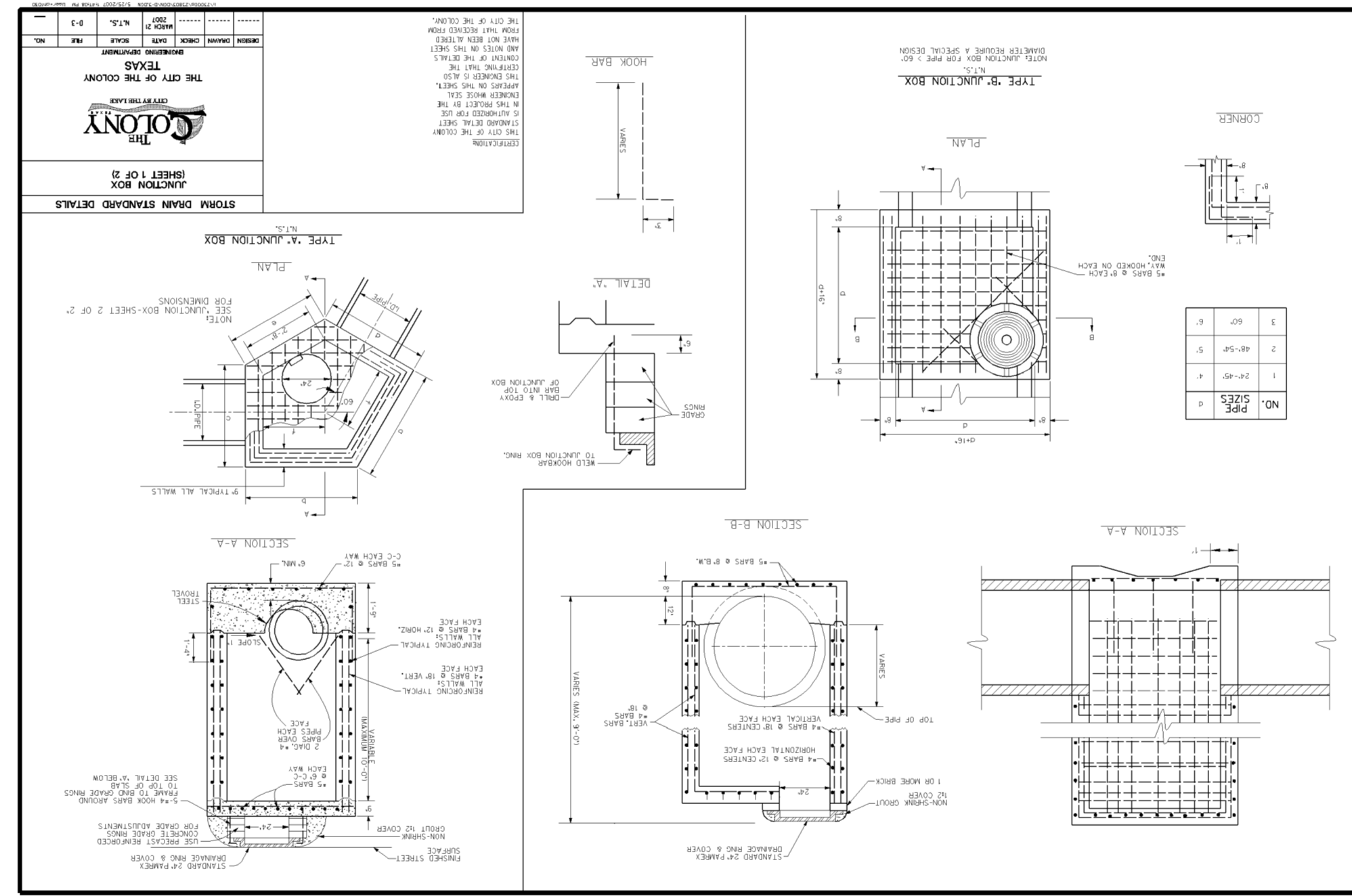
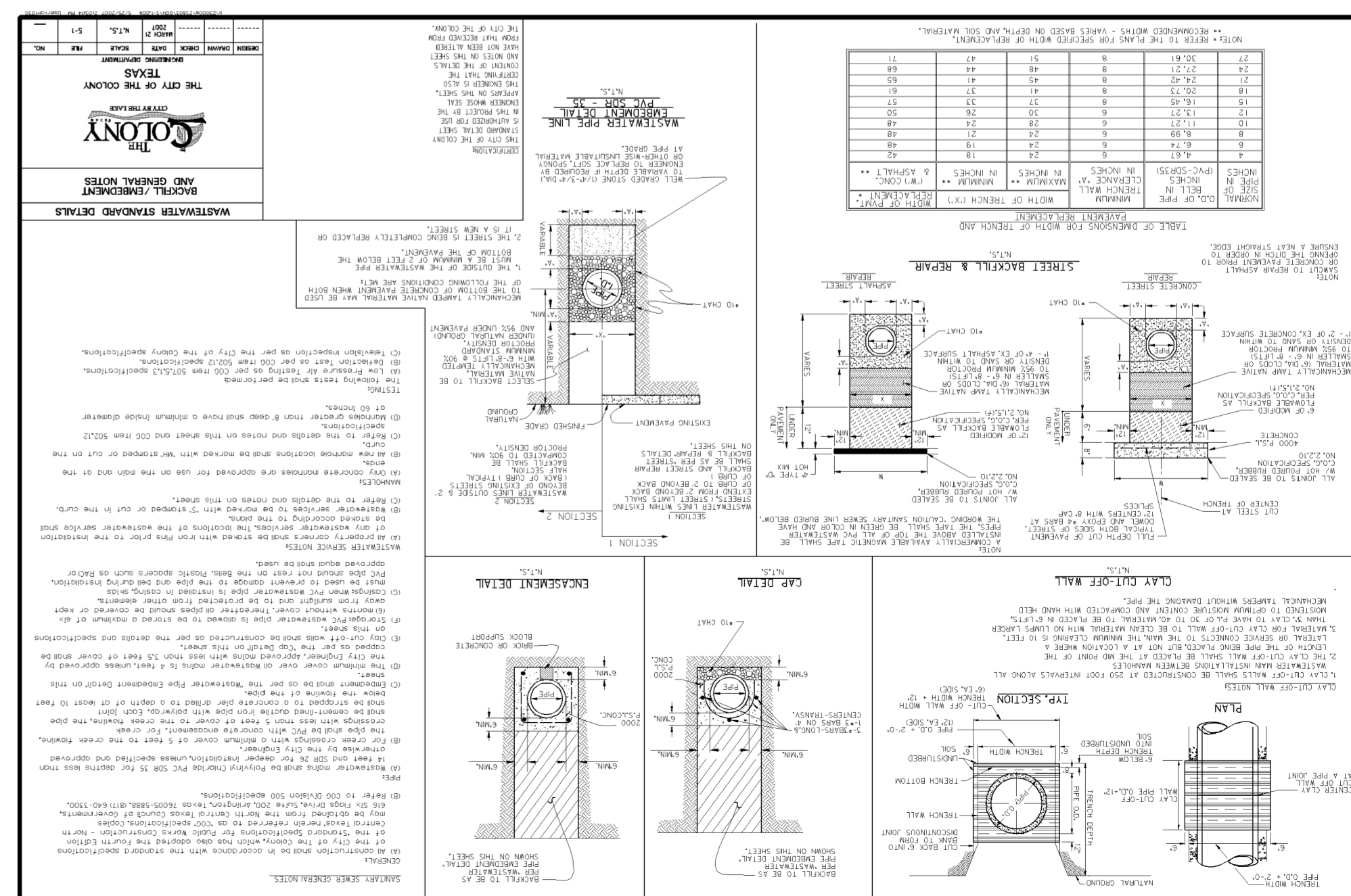
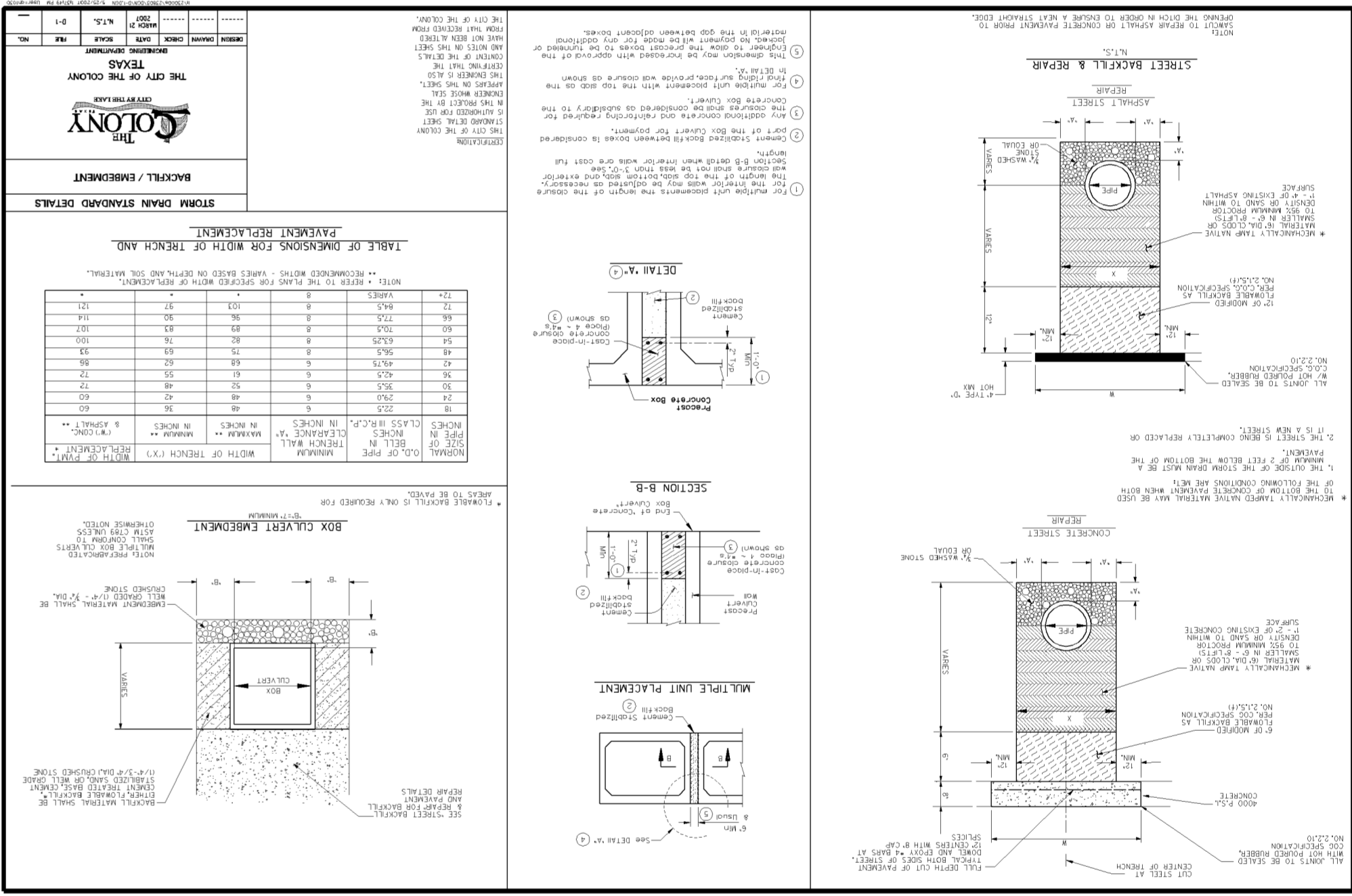
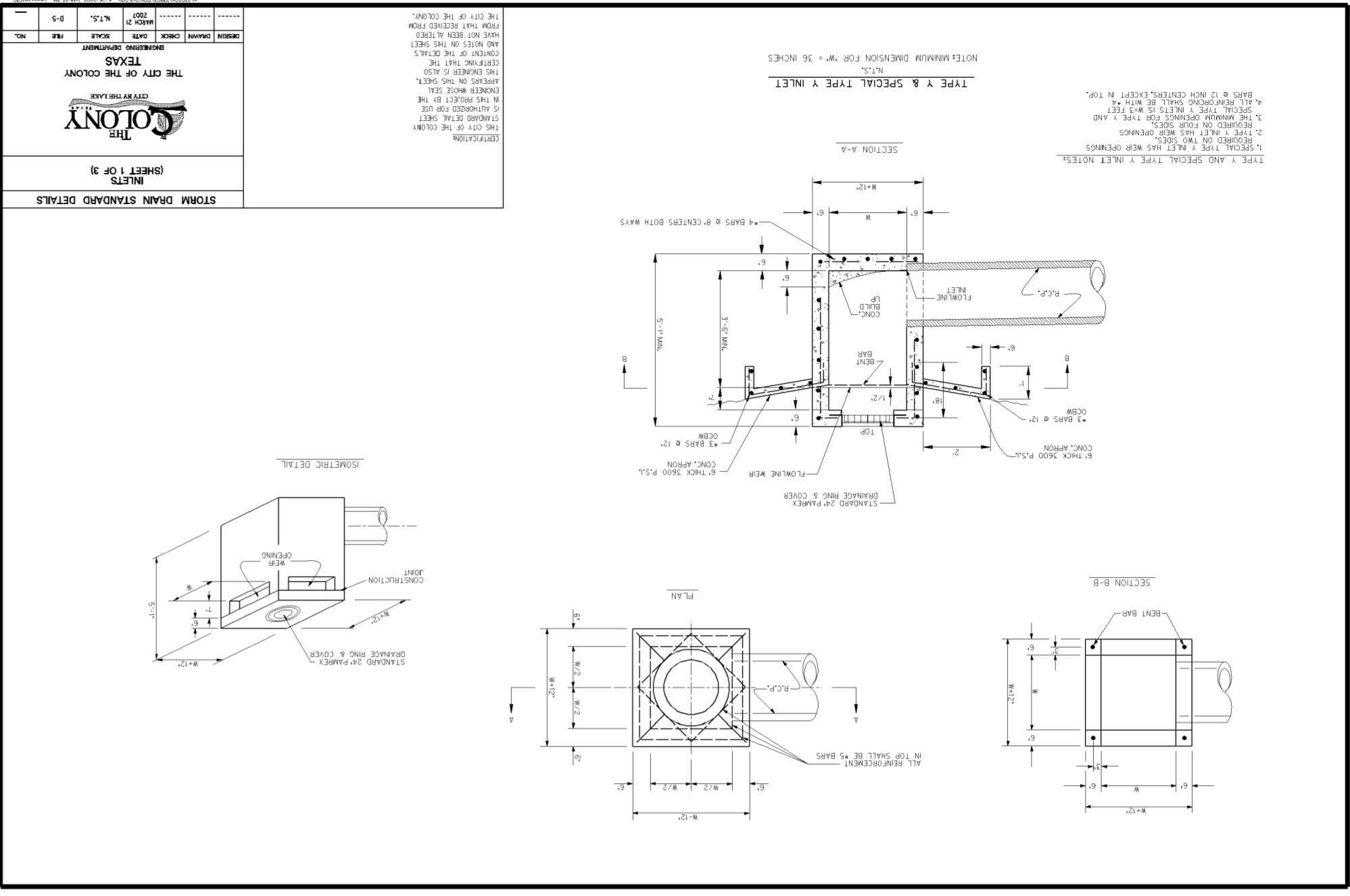


TABLE OF DIMENSIONS FOR WIDTH OF TRENCH AND BACKFILL / EMBANKMENT

NO.	DEPTH	WIDTH	MINIMUM	MAXIMUM
1	0-1	36"	36"	36"
2	1-2	48"	48"	48"
3	2-3	60"	60"	60"
4	3-4	72"	72"	72"
5	4-5	84"	84"	84"
6	5-6	96"	96"	96"
7	6-7	108"	108"	108"
8	7-8	120"	120"	120"
9	8-9	132"	132"	132"
10	9-10	144"	144"	144"
11	10-11	156"	156"	156"
12	11-12	168"	168"	168"
13	12-13	180"	180"	180"
14	13-14	192"	192"	192"
15	14-15	204"	204"	204"
16	15-16	216"	216"	216"
17	16-17	228"	228"	228"
18	17-18	240"	240"	240"
19	18-19	252"	252"	252"
20	19-20	264"	264"	264"
21	20-21	276"	276"	276"
22	21-22	288"	288"	288"
23	22-23	300"	300"	300"
24	23-24	312"	312"	312"
25	24-25	324"	324"	324"
26	25-26	336"	336"	336"
27	26-27	348"	348"	348"
28	27-28	360"	360"	360"
29	28-29	372"	372"	372"
30	29-30	384"	384"	384"
31	30-31	396"	396"	396"
32	31-32	408"	408"	408"
33	32-33	420"	420"	420"
34	33-34	432"	432"	432"
35	34-35	444"	444"	444"
36	35-36	456"	456"	456"
37	36-37	468"	468"	468"
38	37-38	480"	480"	480"
39	38-39	492"	492"	492"
40	39-40	504"	504"	504"
41	40-41	516"	516"	516"
42	41-42	528"	528"	528"
43	42-43	540"	540"	540"
44	43-44	552"	552"	552"
45	44-45	564"	564"	564"
46	45-46	576"	576"	576"
47	46-47	588"	588"	588"
48	47-48	600"	600"	600"
49	48-49	612"	612"	612"
50	49-50	624"	624"	624"
51	50-51	636"	636"	636"
52	51-52	648"	648"	648"
53	52-53	660"	660"	660"
54	53-54	672"	672"	672"
55	54-55	684"	684"	684"
56	55-56	696"	696"	696"
57	56-57	708"	708"	708"
58	57-58	720"	720"	720"
59	58-59	732"	732"	732"
60	59-60	744"	744"	744"
61	60-61	756"	756"	756"
62	61-62	768"	768"	768"
63	62-63	780"	780"	780"
64	63-64	792"	792"	792"
65	64-65	804"	804"	804"
66	65-66	816"	816"	816"
67	66-67	828"	828"	828"
68	67-68	840"	840"	840"
69	68-69	852"	852"	852"
70	69-70	864"	864"	864"
71	70-71	876"	876"	876"
72	71-72	888"	888"	888"
73	72-73	900"	900"	900"
74	73-74	912"	912"	912"
75	74-75	924"	924"	924"
76	75-76	936"	936"	936"
77	76-77	948"	948"	948"
78	77-78	960"	960"	960"
79	78-79	972"	972"	972"
80	79-80	984"	984"	984"
81	80-81	996"	996"	996"
82	81-82	1008"	1008"	1008"
83	82-83	1020"	1020"	1020"
84	83-84	1032"	1032"	1032"
85	84-85	1044"	1044"	1044"
86	85-86	1056"	1056"	1056"
87	86-87	1068"	1068"	1068"
88	87-88	1080"	1080"	1080"
89	88-89	1092"	1092"	1092"
90	89-90	1104"	1104"	1104"
91	90-91	1116"	1116"	1116"
92	91-92	1128"	1128"	1128"
93	92-93	1140"	1140"	1140"
94	93-94	1152"	1152"	1152"
95	94-95	1164"	1164"	1164"
96	95-96	1176"	1176"	1176"
97	96-97	1188"	1188"	1188"
98	97-98	1200"	1200"	1200"
99	98-99	1212"	1212"	1212"
100	99-100	1224"	1224"	1224"

TABLE OF DIMENSIONS FOR WIDTH OF TRENCH AND BACKFILL / EMBANKMENT

NO.	DEPTH	WIDTH	MINIMUM	MAXIMUM
1	0-1	36"	36"	36"
2	1-2	48"	48"	48"
3	2-3	60"	60"	60"
4	3-4	72"	72"	72"
5	4-5	84"	84"	84"
6	5-6	96"	96"	96"
7	6-7	108"	108"	108"
8	7-8	120"	120"	120"
9	8-9	132"	132"	132"
10	9-10	144"	144"	144"
11	10-11	156"	156"	156"
12	11-12	168"	168"	168"
13	12-13	180"	180"	180"
14	13-14	192"	192"	192"
15	14-15	204"	204"	204"
16	15-16	216"	216"	216"
17	16-17	228"	228"	228"
18	17-18	240"	240"	240"
19	18-19	252"	252"	252"
20	19-20	264"	264"	264"
21	20-21	276"	276"	276"
22	21-22	288"	288"	288"
23	22-23	300"	300"	300"
24	23-24	312"	312"	312"
25	24-25	324"	324"	324"
26	25-26	336"	336"	336"
27	26-27	348"	348"	348"
28	27-28	360"	360"	360"
29	28-29	372"	372"	372"
30	29-30	384"	384"	384"
31	30-31	396"	396"	396"
32	31-32	408"	408"	408"
33	32-33	420"	420"	420"
34	33-34	432"	432"	432"
35	34-35	444"	444"	444"
36	35-36	456"	456"	456"
37	36-37	468"	468"	468"
38	37-38	480"	480"	480"
39	38-39	492"	492"	492"
40	39-40	504"	504"	504"
41	40-41	516"	516"	516"
42	41-42	528"	528"	528"
43	42-43	540"	540"	540"
44	43-44	552"	552"	552"
45	44-45	564"	564"	564"
46	45-46	576"	576"	576"
47	46-47	588"	588"	588"
48	47-48	600"	600"	600"
49	48-49	612"	612"	612"
50	49-50	624"	624"	624"
51	50-51	636"	636"	636"
52	51-52	648"	648"	648"
53	52-53	660"	660"	660"
54	53-54	672"	672"	672"
55	54-55	684"	684"	684"
56	55-56	696"	696"	696"
57	56-57	708"	708"	708"
58	57-58	720"	720"	720"
59	58-59	732"	732"	732"
60	59-60	744"	744"	744"
61	60-61	756"	756"	756"
62	61-62	768"	768"	768"
63	62-63	780"	780"	780"
64	63-64	792"	792"	792"
65	64-65	804"	804"	804"
66	65-66	816"	816"	816"
67	66-67	828"	828"	828"
68	67-68	840"	840"	840"
69	68-69	852"	852"	852"
70	69-70	864"	864"	864"
71	70-71	876"	876"	876"
72	71-72	888"	888"	888"
73	72-73	900"	900"	900"
74	73-74	912"	912"	912"
75	74-75	924"	924"	924"
76	75-76	936"	936"	936"
77	76-77	948"	948"	948"
78	77-78	960"	960"	960"
79	78-79	972"	972"	972"
80	79-80	984"	984"	984"
81	80-81	996"	996"	996"
82	81-82	1008"	1008"	1008"
83	82-83	1020"	1020"	1020"
84	83-84	1032"	1032"	1032"
85	84-85	1044"	1044"	1044"
86	85-86	1056"	1056"	1056"
87	86-87	1068"	1068"	1068"
88	87-88	1080"	1080"	1080"
89	88-89	1092"	1092"	1092"
90	89-90	1104"	1104"	1104"
91	90-91	1116"	1116"	1116"
92	91-92	1128"	1128"	1128"
93	92-93	1140"	1140"	1140"
94	93-94	1152"	1152"	1152"
95	94-95	1164"	1164"	1164"
96	95-96	1176"	1176"	1176"
97	96-97	1188"	1188"	1188"
98	97-98	1200"	1200"	1200"
99	98-99	1212"	1212"	1212"
100	99-100	1224"	1224"	1224"

TABLE OF DIMENSIONS FOR WIDTH OF TRENCH AND BACKFILL / EMBANKMENT

NO.	DEPTH	WIDTH	MINIMUM	MAXIMUM
1	0-1	36"	36"	36"
2	1-2	48"	48"	48"
3	2-3	60"	60"	60"
4	3-4	72"	72"	72"
5	4-5	84"	84"	84"
6	5-6	96"	96"	96"
7	6-7	108"	108"	108"
8	7-8	120"	120"	120"
9	8-9	132"	132"	132"
10	9-10	144"	144"	144"
11	10-11	156"	156"	156"
12	11-12	168"	168"	168"
13	12-13	180"	180"	180"
14	13-14	192"	192"	192"
15	14-15	204"	204"	204"
16	15-16	216"	216"	216"
17	16-17	228"	228"	228"
18	17-18	240"	240"	240"
19	18-19	252"	252"	252"
20	19-20	264"	264"	264"
21	20-21	276"	276"	276"
22	21-22	288"	288"	288"
23	22-23	300"	300"	300"
24	23-24	312"	312"	312"
25	24-25	324"	324"	324"
26	25-26	336"	336"	336"
27	26-27	348"	348"	348"
28	27-28	360"	360"	360"
29	28-29	372"	372"	372"
30	29-30	384"	384"	384"
31	30-31	396"	396"	396"
32	31-32	408"	408"	408"
33	32-33	420"	420"	420"
34	33-34	432"	432"	432"
35	34-35	444"	444"	444"
36	35-36	456"	456"	456"
37	36-37	468"	468"	468"
38	37-38	480"	480"	480"
39	38-39	492"	492"	492"
40	39-40	504"	504"	504"
41				



Electronic seal size may differ slightly

