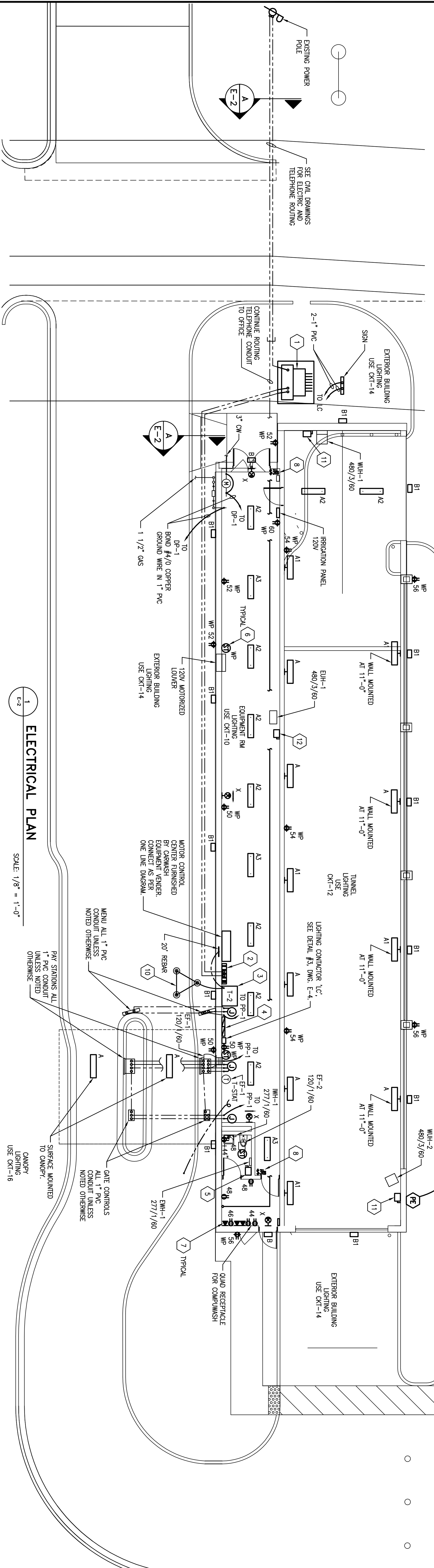


**TRANSFORMER PAD SECTION & DETAILS**

SCALE: NONE



**ELECTRICAL PLAN**

SCALE: 1/8" = 1'-0"

**GENERAL ELECTRICAL NOTES:**

1. REFER TO LEGEND AND LUMINAIRE SCHEDULE. DWG. E-1; ONE LINE DIAGRAM AND ELECTRICAL PANEL SCHEDULES, DWG. E-4 FOR INSTALLATION DETAILS, FEEDER AND CONDUIT SIZES, ETC.
2. ALL RECEPACLES ARE GFCI EXCEPT FOR IN THE OFFICE. FOR RECEPACLES INDICATED AS "WP" USE HUBBELL CAT. #MP228PM.
3. NEW RECEPACLES - CIRCUIT NUMBER AS INDICATED. USE 2 #12, #12 EG-1/2" C. TO FEED RECEPACLES. ALL CIRCUITS SHALL BE RUN WITH INDIVIDUAL #12 NEUTRAL WIRE. CIRCUITS SHALL NOT SHARE NEUTRAL WIRES.
4. NEW LIGHTING FIXTURES - CIRCUITS ARE INDICATED IN OR NEXT TO ROOM. ALL NOT SHARE NEUTRAL WIRES. ALL EXIT LIGHTS TO BE CONNECTED TO ROOM CIRCUIT AHEAD OF ANY SWITCHING.
5. REFER TO CAR WASH EQUIPMENT DRAWINGS FOR CONDUIT AND WIRE CONNECTIONS TO CAR WASH EQUIPMENT PROVIDED BY COMPANISH. CONDUIT, WIRE, DISCONNECT SWITCHES, ETC. SHOWN ON CAR WASH EQUIPMENT DRAWINGS ARE THE RESPONSIBILITY OF THE CONTRACTOR.
6. SEE SPECIFICATIONS ON DWG. E-1.

**ELECTRICAL CODED NOTES:**

1. NEW 750VA TRANSFORMER SEE DETAIL #4. THIS DRAWING FOR PAD DETAILS. FURNISH AS SHOWN ON ONE LINE DIAGRAM, DWG. E-4.
2. NEW DISTRIBUTION SWITCHBOARD DP-1 277/480 VOLT, 800 AMP, 3-PHASE, 4-WIRE, NEMA-3R, SERVICE ENTRANCE RATED FLOOR MOUNTED ON 4" CONCRETE MAINTENANCE PAD. FURNISH AS SHOWN ON ONE LINE DIAGRAM, DWG. E-4.
3. NEW 750VA TRANSFORMER T-2 480/120/208 VOLT, 3-PHASE, 4-WIRE, NON-VENTILATED, FLOOR MOUNTED ON 4" CONCRETE MAINTENANCE PAD. FURNISH AS SHOWN ON ONE LINE DIAGRAM, DWG. E-4.
4. NEW PANEL, PP-1, DOUBLE WIRE, 120/208 VOLT, 225 AMP, 84 CIRCUITS, 3-PHASE, 4-WIRE, NEMA-3R, SURFACE MOUNTED BREAKER PANEL. FURNISH AS SHOWN ON ONE LINE DIAGRAM, DWG. E-4.
5. NEW 600 VOLT, 30 AMP, 2-POLE, NEMA-1, NON-RISED SURFACE MOUNTED DISCONNECT SWITCH. FURNISH AND INSTALL AS SHOWN ON ONE LINE DIAGRAM, DWG. E-4.
6. NEW 120 VOLT, 20 AMP FRACTIONAL HORSEPOWER STARTER (S1) IN WEATHERPROOF ENCLOSURE MOUNTED ON EXHAUST FAN/LOUVER. AS SHOWN, FURNISH AND INSTALL 2 #12, #12 EG-1/2" C. FROM CIRCUIT AS PROVIDED ON LIGHTING SCHEDULES TO EXHAUST FAN VIA THERMOSTAT CONTROL. IF PROVIDED WITH EXHAUST FAN, SEE MECHANICAL DRAWINGS FOR LOCATIONS, TYPICAL FOR ALL (S1).
7. VOICE/DATA OUTLET-FURNISH AND INSTALL TWO(2) 8 PIN RJ-45 CONNECTORS, ONE(1) VOICE AND ONE(1) DATA. FURNISH AND INSTALL 2-4 PAR #18 CAT. 6 CABLE IN 1" C. UP WALL AND INTO CEILING SPACE OF OFFICE AS SHOWN. PROVIDE 2 INCH PULSTRINGS IN EACH CONDUIT. RECESSED MOUNTED, 18" A.F.F. UNLESS OTHERWISE NOTED.
8. TS-400 DIGITAL TIME SWITCH OCCUPANCY SENSOR-SEE DETAIL #1. DWG. E-1.
9. UM-100 ULTRASONIC WALL SWITCH OCCUPANCY SENSOR-SEE DETAIL #2. DWG. E-1.
10. NEW GROUNDING GRD-FURNISH AND INSTALL 3-3/4" X 10'-0" COPPER CLOD STEEL GROUND RODS IN A HORIZONTAL LINE FROM: CAPPED #4/0 SOLID TINNED COPPER GROUND WIRE TO EACH ROD.
11. FURNISH AND INSTALL NEW 600V, 60A, 3P, N.F., NEMA-4X, SURFACE MOUNTED DISCONNECT. LAST 24" TO BE SEALTITE CONDUIT. FURNISH AND INSTALL AS SHOWN ON ONE LINE DIAGRAM, DWG. E-4. (TYPICAL FOR 2)
12. FURNISH AND INSTALL NEW 600V, 30A, 3P, N.F., NEMA-3R, SURFACE MOUNTED DISCONNECT. LAST 24" TO BE SEALTITE CONDUIT. FURNISH AND INSTALL AS SHOWN ON ONE LINE DIAGRAM, DWG. E-4.

**ELECTRICAL CODED NOTES CONTINUED:**

1. SEE CIVIL DRAWINGS FOR PIPE CROSSING DEPTH CORROSION PROTECTION.
2. 2-4" PVC SCHEDULE 40 CONCRETE ENCASED BACKFILL OR FINISHED SURFACE.
3. #6 REBAR CONTINUOUS SUPPORT FROM CONDUIT SPACERS LAP 36" MIN. TYPICAL FOR 4'. FURNISH AND INSTALL NYLON PULL STRING IN EMPTY CONDUITS.
4. CONTINUE ROUTING TELEPHONE CONDUIT TO OFFICE.
5. EXTERIOR BUILDING LIGHTING USE CKT-14.
6. SIGN.
7. 2-1" PVC.
8. 3" CW.
9. 120V.
10. IRRIGATION PANEL.
11. 480/3/60.
12. 120V.
13. 480/3/60.
14. 120V.
15. 480/3/60.
16. 120V.
17. 480/3/60.
18. 120V.
19. 480/3/60.
20. 120V.
21. 480/3/60.
22. 120V.
23. 480/3/60.
24. 120V.
25. 480/3/60.
26. 120V.
27. 480/3/60.
28. 120V.
29. 480/3/60.
30. 120V.
31. 480/3/60.
32. 120V.
33. 480/3/60.
34. 120V.
35. 480/3/60.
36. 120V.
37. 480/3/60.
38. 120V.
39. 480/3/60.
40. 120V.
41. 480/3/60.
42. 120V.
43. 480/3/60.
44. 120V.
45. 480/3/60.
46. 120V.
47. 480/3/60.
48. 120V.
49. 480/3/60.
50. 120V.
51. 480/3/60.
52. 120V.
53. 480/3/60.
54. 120V.
55. 480/3/60.
56. 120V.
57. 480/3/60.
58. 120V.
59. 480/3/60.
60. 120V.
61. 480/3/60.
62. 120V.
63. 480/3/60.
64. 120V.
65. 480/3/60.
66. 120V.
67. 480/3/60.
68. 120V.
69. 480/3/60.
70. 120V.
71. 480/3/60.
72. 120V.
73. 480/3/60.
74. 120V.
75. 480/3/60.
76. 120V.
77. 480/3/60.
78. 120V.
79. 480/3/60.
80. 120V.
81. 480/3/60.
82. 120V.
83. 480/3/60.
84. 120V.
85. 480/3/60.
86. 120V.
87. 480/3/60.
88. 120V.
89. 480/3/60.
90. 120V.
91. 480/3/60.
92. 120V.
93. 480/3/60.
94. 120V.
95. 480/3/60.
96. 120V.
97. 480/3/60.
98. 120V.
99. 480/3/60.
100. 120V.

**DUCT BANK SECTION A**

**RESTROOM AND OFFICE LIGHTING PLAN**

**GENERAL ELECTRICAL NOTES:**

**ELECTRICAL CODED NOTES:**

**ELECTRICAL CODED NOTES CONTINUED:**



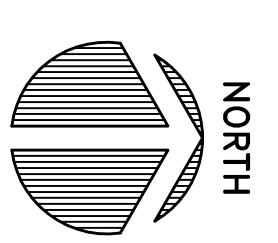
MARK	DESCRIPTION OF ISSUE	DATE	BY	MARK	DESCRIPTION OF REVISION	DATE	BY
1	ISSUED FOR PERMIT	8/12/08	DEC				
2	RE-ISSUED FOR PERMIT	11/11/08	DEC				

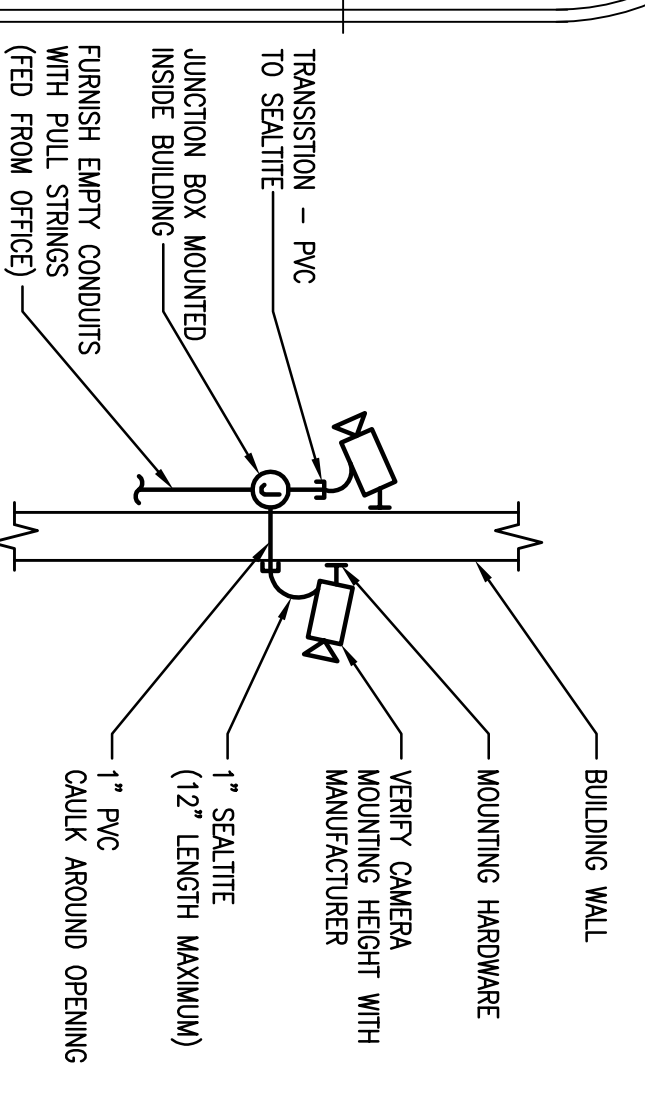
OSBORN PROJECT NO.	DRAWING NO.	DRAWN	CHECKED	T.M.	ISSUE NO.
13666	E-2	7/21/08	8/12/08	SM/ZB	

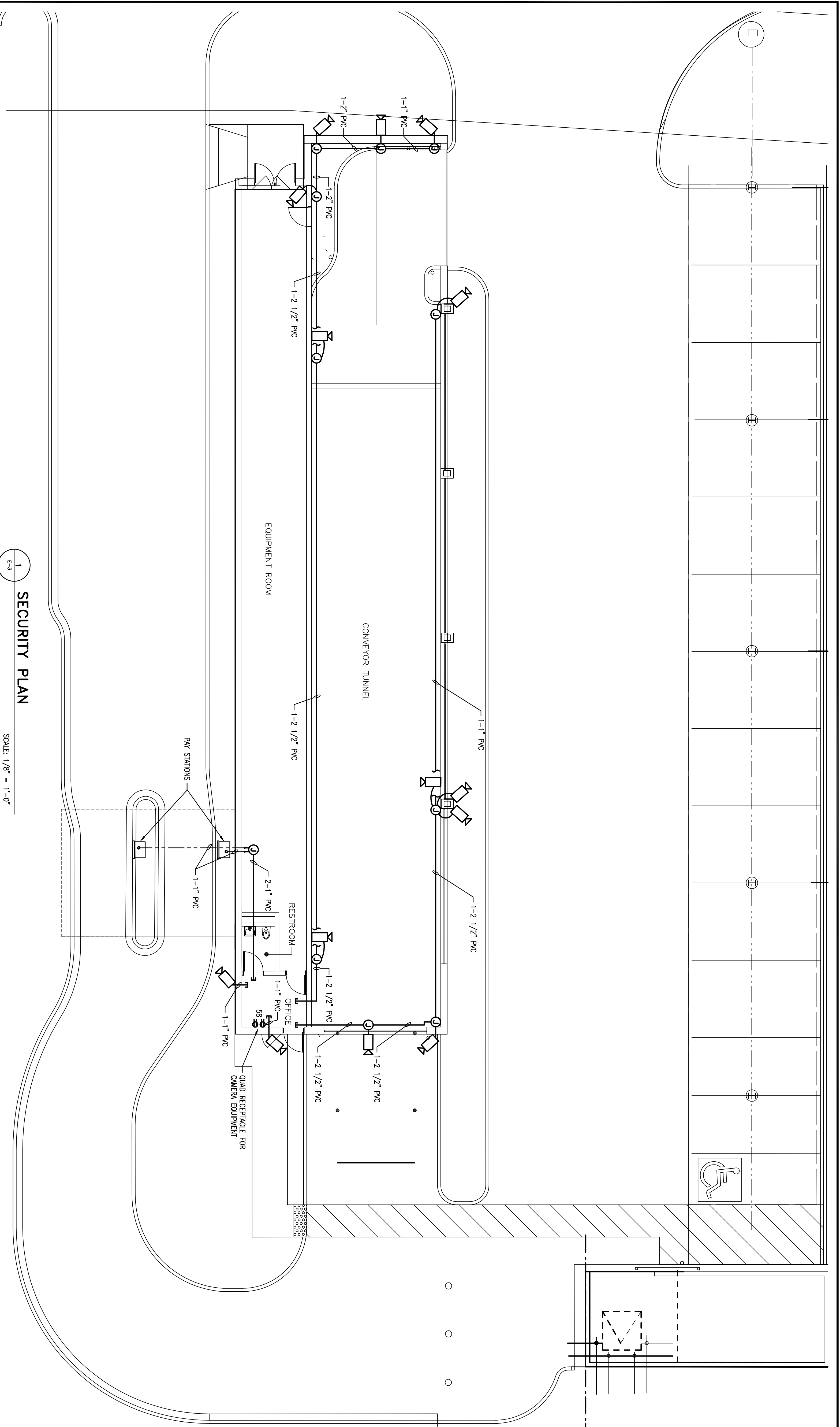
SCALE	AS NOTED
0 5 10 20	1/8" = 1'-0"



- GENERAL ELECTRICAL NOTES:**
1. REFER TO LEGEND AND FUTURE SCHEDULE, DWG. E-1; ONE LINE DIAGRAM AND ELECTRICAL PANEL SCHEDULES, DWG. E-4 FOR INSTALLATION DETAILS, FEEDER AND CONDUIT SIZES, ETC.
  2. VERIFY WITH OWNER THE EXACT LOCATIONS OF THE CAMERAS.
  3. REFER TO CAR WASH EQUIPMENT DRAWINGS FOR CONDUIT AND WIRE CONNECTIONS TO CAR WASH EQUIPMENT PROVIDED BY COMPANISH. CONDUIT, WIRE, DISCONNECT SWITCHES, ETC. SHOWN ON CAR WASH EQUIPMENT DRAWINGS ARE THE RESPONSIBILITY OF THE CONTRACTOR.



**2**  
TYPICAL SECURITY CAMERA CONNECTION DETAIL  
SCALE: NONE



**1**  
SECURITY PLAN  
SCALE: 1/8" = 1'-0"

MARK	DESCRIPTION OF ISSUE	DATE	BY	MARK	DESCRIPTION OF REVISION	DATE	BY
1	ISSUED FOR PERMIT	8/12/08	DEC				
2	RE-ISSUED FOR PERMIT	11/11/08	DEC				

**OSBORN ENGINEERING**

1300 East 9th Street - Suite 1300 | Cleveland, OH 44114  
 441 Wolf Ledges Parkway - Suite 300 | Akron, OH 44311

VC CAPITAL, LLC.  
THE PIPELINE AUTO SPA  
SECURITY PLAN

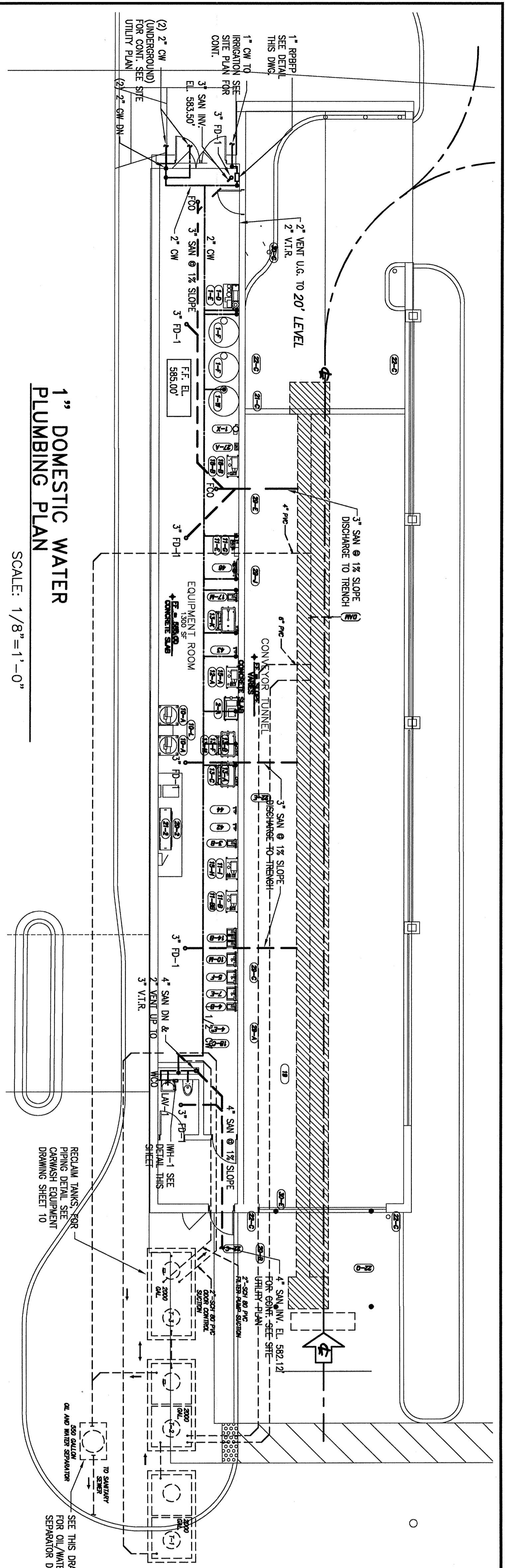
SCALE AS NOTED

OSBORN PROJECT NO. 13666  
 DRAWING NO. E-3  
 DRAWN 7/21/08  
 CHECKED 8/12/08  
 PRINTED SMJ/ZEB

ISSUE NO.







SYMBOL	DESCRIPTION
---	NEW SANITARY BELOW FLOOR
---	NEW SANITARY ABOVE FLOOR
---	NEW VENT
---	NEW DOMESTIC COLD WATER
---	BALL VALVE
---	GATE VALVE
---	GLOBE VALVE
---	CHECK VALVE
---	CAP
---	CONNECTION - TOP
---	CONNECTION - BOTTOM
---	ELBOW - TURNED UP
---	ELBOW - TURNED DOWN
---	WATER CLOSET
---	LAVATORY
---	FLOOR CLEAN OUT
---	REDUCED PRESSURE BACKFLOW PREVENTOR
---	TYPICAL
---	ABOVE FINISH FLOOR
---	INVERT ELEVATION
---	BACK FLOW PREVENTOR

**PLUMBING LEGEND**



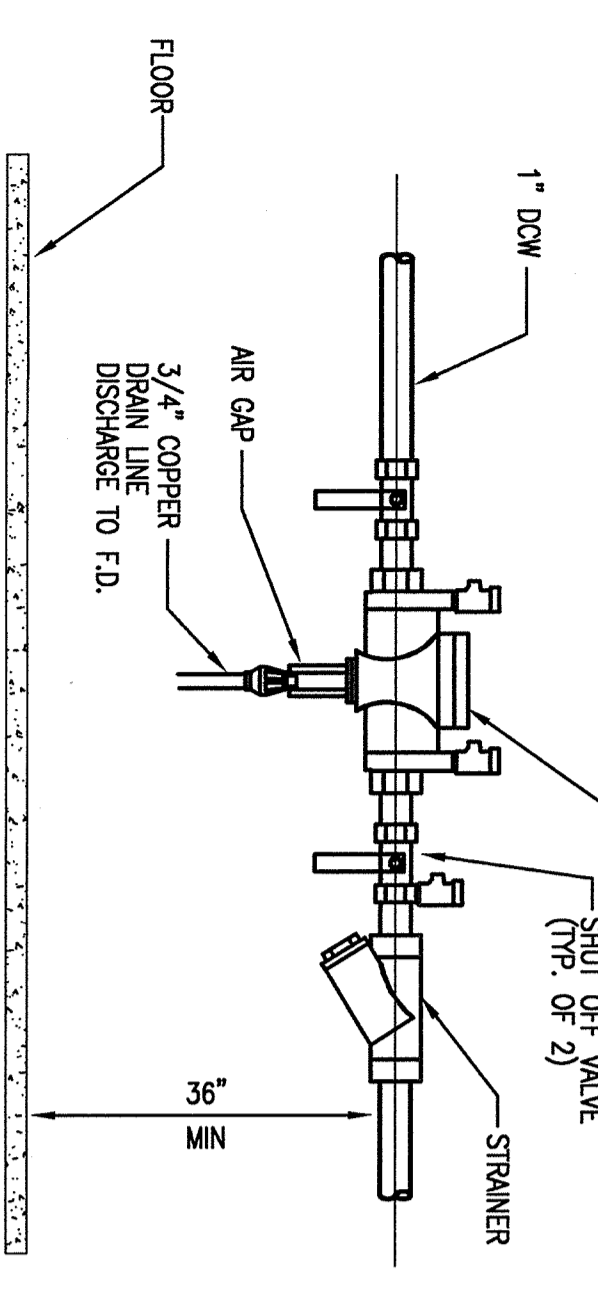
**GENERAL NOTES:**

- ALL FLOOR DRAINS IN BATHROOMS ARE TO BE TRAP PRIMED FROM NEAREST WATER CLOSET. IN LIEU OF TRAP PRIMING EQUIPMENT ROOM FLOOR DRAINS A TRAP GUARD INSERT SIMILAR TO TRAPGUARD MODEL TGH MAY BE USED.
- ALL HORIZONTAL SANITARY AND STORM LINES SHALL SLOPE AT MINIMUM 1% PER LINEAR FOOT UNLESS OTHERWISE NOTED.
- SHUT-OFF VALVES SHALL BE PROVIDED & INSTALLED AT EACH HOT & COLD WATER BRANCH LINE.
- SEE CAR WASH EQUIPMENT DRAWING SHEET 06 FOR BRANCH LINE SIZES TO EQUIPMENT.
- INSTALL WATER HAMMER ARRESTORS AT ALL FIXTURE GROUPS.

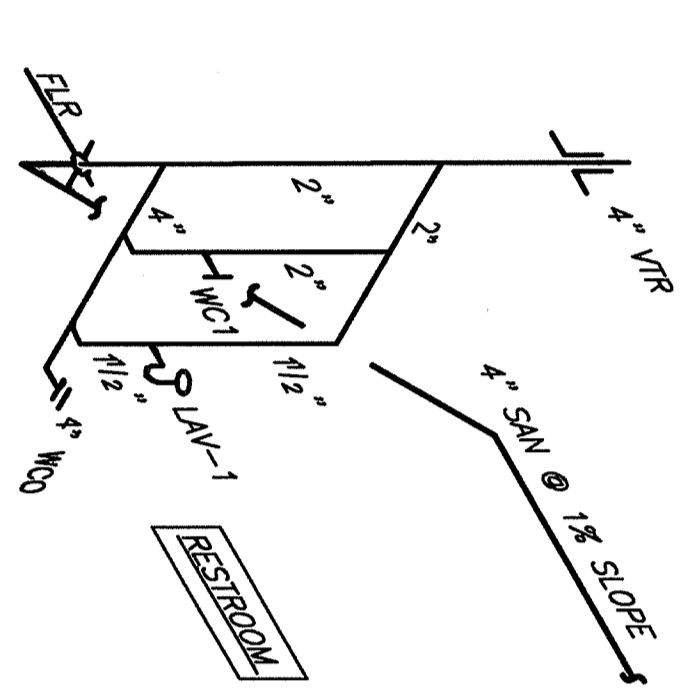
FIXTURE	TRAP	VENT	CV	HV	REMARKS
WATER CLOSET	WC-1	4"	2"	1 1/2"	WALL HANG
VATIER CLOSET	WC-1	4"	2"	1 1/2"	WALL HANG, BARBER-FREE FIXTURE
LAVATORY	LAV-1	1 1/4"	1 1/2"	1/2"	BARBER-FREE FIXTURE
URINE BIBB	UB-2	-	-	3/4"	FROST PROOF V. VACUUM BREAKER

**PLUMBING FIXTURE SCHEDULE**

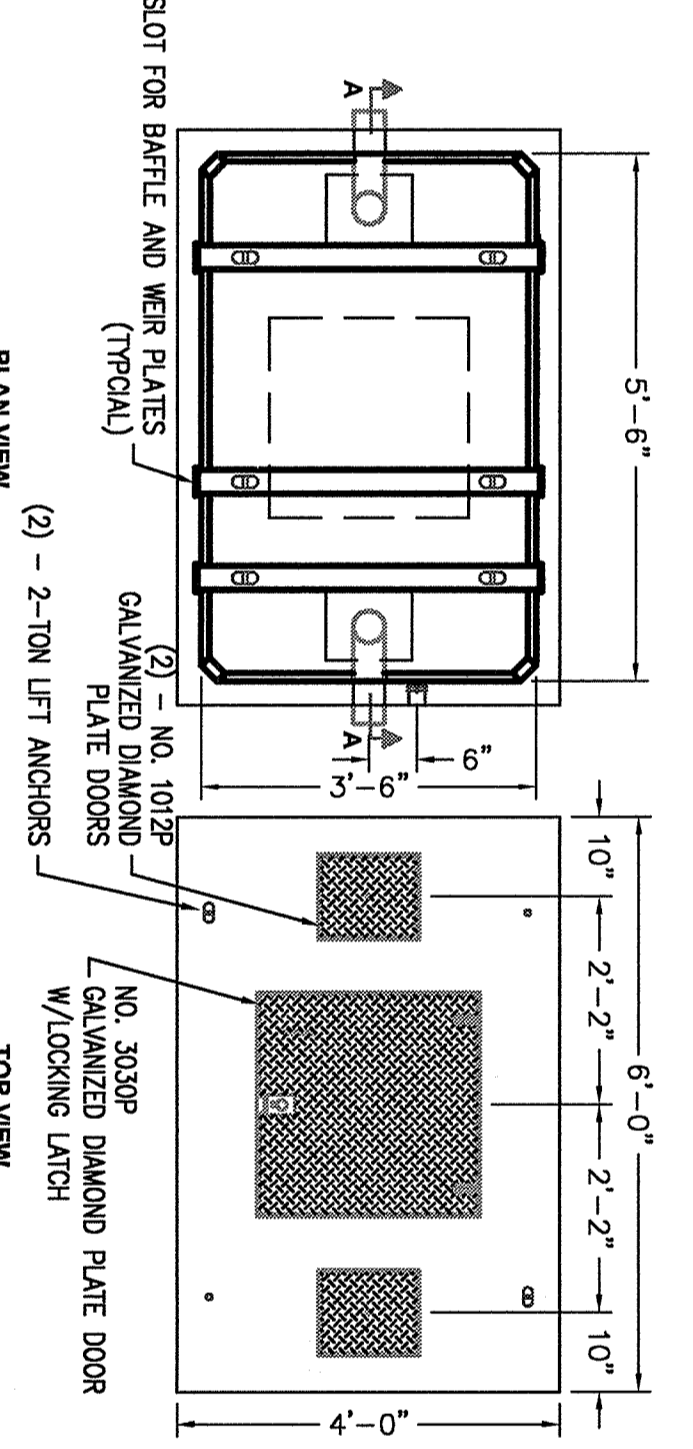
**1" DOMESTIC WATER PLUMBING PLAN**  
SCALE: 1/8" = 1'-0"



**1" DOMESTIC WATER REDUCED PRESSURE BACKFLOW PREVENTER**  
SCALE: NONE



**SANITARY ISOMETRIC**  
SCALE: NONE



**550 GALLON OIL WATER SEPARATOR DETAIL**  
SCALE: 1/2" = 1'-0"

MARK	LOCATION	MANUFACTURER	MODEL	WATTS	VOLTAGE	GPM	TEMP RISE OF
WH-1	BATHROOM	CHROMIUMITE	M-15L	4150	277V/1ϕ	0.5	57F

**INSTANTANEOUS ELECTRIC WATER HEATERS**

**TYPICAL LAVATORY DIAGRAM W/ INSTANT-FLOW TANKLESS WATER HEATER**  
SCALE: NONE

MARK	DESCRIPTION OF ISSUE	DATE	BY	MARK	DESCRIPTION OF REVISION	DATE	BY
1	ISSUED FOR PERMIT	8/12/08	DEC				
2	RE-ISSUED FOR PERMIT	11/11/08	DEC				

- PLUMBING SPECIFICATIONS**
- CONTRACTOR SHALL FINISH ALL MATERIALS MEETING ANSI AND ITS SPECIFICATIONS. THE CONTRACTOR SHALL ARRANGE AND PAY FOR ALL PERMITS, FEES AND INSPECTIONS REQUIRED IN CONNECTION WITH HIS WORK.
  - ALL EQUIPMENT AND MATERIALS SHALL BE INSTALLED IN A NET AND NEIGHBORLY MANNER. THE CONTRACTOR SHALL BE RESPONSIBLE FOR OBTAINING ALL NECESSARY PERMITS. THE CONTRACTOR IS RESPONSIBLE FOR THE SAFETY AND CONDITION OF THE EQUIPMENT, MATERIALS, AND SYSTEMS UNTIL FINAL ACCEPTANCE OF THE SYSTEM.
  - SANITARY PIPING SHALL BE AS FOLLOWS:
    - ABOVE GROUND PIPING SHALL BE ASTM A888 SERVICE WEIGHT HEAVY DUTY CAST IRON PIPE AND CAST IRON NO. 10025 GALVANIZED DIAMOND PLATE DOORS.
    - UNDERGROUND PIPING WITHIN 5'-0" OF THE BUILDING SHALL BE PVC SCHEDULE 40 DWV PIPE AND FITTINGS. SIZES SHALL BE MANUFACTURED IN ACCORDANCE WITH THE MANUFACTURER'S LISTED SIZES. SIZES SHALL BE A MINIMUM CELL CLASSIFICATION OF 12494-9 AS DENIED IN ASTM D-1724.
    - PIPING SHALL BE TESTED IN ACCORDANCE WITH THE GOVERNING PLUMBING CODE.
  - DOMESTIC WATER PIPING
    - ABOVE GROUND PIPING 3" AND SMALLER SHALL BE ASTM B88 TYPE 1 COPPER TUBING WITH ANSI B16.22 WROUGHT COPPER SOLDER JOINT FITTINGS. UNDERGROUND PIPING WITHIN 5'-0" OF THE BUILDING 3" AND SMALLER SHALL BE ASTM B88 TYPE K COPPER TUBING WITH ANSI B16.22 WROUGHT COPPER SOLDER JOINT FITTINGS.
    - PIPING SHALL BE TESTED IN ACCORDANCE WITH THE GOVERNING PLUMBING CODE.
  - VALVES:
    - GATE VALVES UP TO 3" SHALL BE BRONZE BODY, NON RISING STEM AND HANDWHEEL. INSIDE SCREW, WENDE DISC, SOLDER ENDS, NIBCO S-113.
    - BALL VALVES UP TO 2" SHALL BE BRONZE BODY, STAINLESS STEEL BALL, TETON SEALS AND STUFFING BOX RING, LEVER HANDLE, SOLDER ENDS, NIBCO S-580-BR.
    - SHING CHECK VALVES UP TO 3" SHALL BE BRONZE SHING DISC, REMEMBRABLE DISC AND SEAL SOLDER ENDS, NIBCO S-413-B.
    - ACCEPTABLE MANUFACTURERS: NIBCO, ORNIE, POWELL, HAMMOND.
  - PIPE HANGERS AND SUPPORTS:
    - HANGERS FOR PIPE SIZES 1/2" TO 1-1/2" MULTIGRAPHIC IRON, ADJUSTABLE SWAGE SPIT RING, HANGERS FOR PIPE SIZES 2" TO 4" CARBON STEEL, ADJUSTABLE, CELENS.
    - WALL SUPPORT FOR PIPE SIZES TO 3": CAST IRON HOOK.
    - COPPER PIPE SUPPORT: CARBON STEEL RING, ADJUSTABLE COPPER PLATED, ELBOW.
    - ACCEPTABLE MANUFACTURERS: GRINNELL, FEE AND WASON, EBER, UNISTRUT
  - PIPING INSULATION:
    - DOMESTIC HOT & COLD WATER SHALL BE INSULATED WITH 1" GLASS FIBER NON-COMBUSTIBLE FIBERGLASS INSULATION ASYM 5471 WITH A K VALUE OF 0.025. INSULATION SHALL BE INSTALLED OVER THE PIPE AND ALL JOINTS. JOINTS SHALL BE KEPT REINFORCED WHITE WARP BARBER WITH SELF-SEALING CERTANTITEED, FITTSBURGH-CORNING.
  - PLUMBING SPECIALTIES:
    - FLOOR DRAINS (FD-1) SHALL BE CAST IRON BOTTOM GATE VALVE WITH FLASHING COLLAR, 1/2" PUMP UP WEP HOLES AND ADJUSTABLE 6" ROUND SAWN INDOOR STRAINER, JOSAM MODEL 3000-56.

**VC CAPITAL, LLC.**  
**THE PIPELINE AUTO SPA**  
**PLUMBING PLAN**

DRAWING NO	DRAWN	CHECKED	DATE	ISSUE NO
OSBORN PROJECT NO. 13886	OSBORN	OSBORN	5/1/08	B&K
P-1	PRINTED			



SCALE: 1/8" = 1'-0"

OSBORN PROJECT NO. 13886  
DRAWN: OSBORN  
CHECKED: OSBORN  
DATE: 5/1/08  
ISSUE NO: B&K

VC CAPITAL, LLC.  
THE PIPELINE AUTO SPA  
PLUMBING PLAN

OSBORN PROJECT NO. 13886  
DRAWN: OSBORN  
CHECKED: OSBORN  
DATE: 5/1/08  
ISSUE NO: B&K

SCALE: 1/8" = 1'-0"

OSBORN PROJECT NO. 13886  
DRAWN: OSBORN  
CHECKED: OSBORN  
DATE: 5/1/08  
ISSUE NO: B&K

VC CAPITAL, LLC.  
THE PIPELINE AUTO SPA  
PLUMBING PLAN

OSBORN PROJECT NO. 13886  
DRAWN: OSBORN  
CHECKED: OSBORN  
DATE: 5/1/08  
ISSUE NO: B&K

SCALE: 1/8" = 1'-0"

OSBORN PROJECT NO. 13886  
DRAWN: OSBORN  
CHECKED: OSBORN  
DATE: 5/1/08  
ISSUE NO: B&K

VC CAPITAL, LLC.  
THE PIPELINE AUTO SPA  
PLUMBING PLAN

OSBORN PROJECT NO. 13886  
DRAWN: OSBORN  
CHECKED: OSBORN  
DATE: 5/1/08  
ISSUE NO: B&K

SCALE: 1/8" = 1'-0"

OSBORN PROJECT NO. 13886  
DRAWN: OSBORN  
CHECKED: OSBORN  
DATE: 5/1/08  
ISSUE NO: B&K

VC CAPITAL, LLC.  
THE PIPELINE AUTO SPA  
PLUMBING PLAN

OSBORN PROJECT NO. 13886  
DRAWN: OSBORN  
CHECKED: OSBORN  
DATE: 5/1/08  
ISSUE NO: B&K

SCALE: 1/8" = 1'-0"

OSBORN PROJECT NO. 13886  
DRAWN: OSBORN  
CHECKED: OSBORN  
DATE: 5/1/08  
ISSUE NO: B&K

VC CAPITAL, LLC.  
THE PIPELINE AUTO SPA  
PLUMBING PLAN

OSBORN PROJECT NO. 13886  
DRAWN: OSBORN  
CHECKED: OSBORN  
DATE: 5/1/08  
ISSUE NO: B&K

SCALE: 1/8" = 1'-0"

OSBORN PROJECT NO. 13886  
DRAWN: OSBORN  
CHECKED: OSBORN  
DATE: 5/1/08  
ISSUE NO: B&K

VC CAPITAL, LLC.  
THE PIPELINE AUTO SPA  
PLUMBING PLAN

OSBORN PROJECT NO. 13886  
DRAWN: OSBORN  
CHECKED: OSBORN  
DATE: 5/1/08  
ISSUE NO: B&K

SCALE: 1/8" = 1'-0"

OSBORN PROJECT NO. 13886  
DRAWN: OSBORN  
CHECKED: OSBORN  
DATE: 5/1/08  
ISSUE NO: B&K

VC CAPITAL, LLC.  
THE PIPELINE AUTO SPA  
PLUMBING PLAN

OSBORN PROJECT NO. 13886  
DRAWN: OSBORN  
CHECKED: OSBORN  
DATE: 5/1/08  
ISSUE NO: B&K

SCALE: 1/8" = 1'-0"

OSBORN PROJECT NO. 13886  
DRAWN: OSBORN  
CHECKED: OSBORN  
DATE: 5/1/08  
ISSUE NO: B&K

VC CAPITAL, LLC.  
THE PIPELINE AUTO SPA  
PLUMBING PLAN

OSBORN PROJECT NO. 13886  
DRAWN: OSBORN  
CHECKED: OSBORN  
DATE: 5/1/08  
ISSUE NO: B&K

SCALE: 1/8" = 1'-0"

OSBORN PROJECT NO. 13886  
DRAWN: OSBORN  
CHECKED: OSBORN  
DATE: 5/1/08  
ISSUE NO: B&K

VC CAPITAL, LLC.  
THE PIPELINE AUTO SPA  
PLUMBING PLAN

OSBORN PROJECT NO. 13886  
DRAWN: OSBORN  
CHECKED: OSBORN  
DATE: 5/1/08  
ISSUE NO: B&K

SCALE: 1/8" = 1'-0"

OSBORN PROJECT NO. 13886  
DRAWN: OSBORN  
CHECKED: OSBORN  
DATE: 5/1/08  
ISSUE NO: B&K

VC CAPITAL, LLC.  
THE PIPELINE AUTO SPA  
PLUMBING PLAN

OSBORN PROJECT NO. 13886  
DRAWN: OSBORN  
CHECKED: OSBORN  
DATE: 5/1/08  
ISSUE NO: B&K

SCALE: 1/8" = 1'-0"

OSBORN PROJECT NO. 13886  
DRAWN: OSBORN  
CHECKED: OSBORN  
DATE: 5/1/08  
ISSUE NO: B&K

VC CAPITAL, LLC.  
THE PIPELINE AUTO SPA  
PLUMBING PLAN

OSBORN PROJECT NO. 13886  
DRAWN: OSBORN  
CHECKED: OSBORN  
DATE: 5/1/08  
ISSUE NO: B&K

SCALE: 1/8" = 1'-0"

OSBORN PROJECT NO. 13886  
DRAWN: OSBORN  
CHECKED: OSBORN  
DATE: 5/1/08  
ISSUE NO: B&K

VC CAPITAL, LLC.  
THE PIPELINE AUTO SPA  
PLUMBING PLAN

OSBORN PROJECT NO. 13886  
DRAWN: OSBORN  
CHECKED: OSBORN  
DATE: 5/1/08  
ISSUE NO: B&K

SCALE: 1/8" = 1'-0"

OSBORN PROJECT NO. 13886  
DRAWN: OSBORN  
CHECKED: OSBORN  
DATE: 5/1/08  
ISSUE NO: B&K

VC CAPITAL, LLC.  
THE PIPELINE AUTO SPA  
PLUMBING PLAN

OSBORN PROJECT NO. 13886  
DRAWN: OSBORN  
CHECKED: OSBORN  
DATE: 5/1/08  
ISSUE NO: B&K

SCALE: 1/8" = 1'-0"

OSBORN PROJECT NO. 13886  
DRAWN: OSBORN  
CHECKED: OSBORN  
DATE: 5/1/08  
ISSUE NO: B&K

VC CAPITAL, LLC.  
THE PIPELINE AUTO SPA  
PLUMBING PLAN

OSBORN PROJECT NO. 13886  
DRAWN: OSBORN  
CHECKED: OSBORN  
DATE: 5/1/08  
ISSUE NO: B&K

SCALE: 1/8" = 1'-0"

OSBORN PROJECT NO. 13886  
DRAWN: OSBORN  
CHECKED: OSBORN  
DATE: 5/1/08  
ISSUE NO: B&K

VC CAPITAL, LLC.  
THE PIPELINE AUTO SPA  
PLUMBING PLAN

OSBORN PROJECT NO. 13886  
DRAWN: OSBORN  
CHECKED: OSBORN  
DATE: 5/1/08  
ISSUE NO: B&K

SCALE: 1/8" = 1'-0"

OSBORN PROJECT NO. 13886  
DRAWN: OSBORN  
CHECKED: OSBORN  
DATE: 5/1/08  
ISSUE NO: B&K

VC CAPITAL, LLC.  
THE PIPELINE AUTO SPA  
PLUMBING PLAN

OSBORN PROJECT NO. 13886  
DRAWN: OSBORN  
CHECKED: OSBORN  
DATE: 5/1/08  
ISSUE NO: B&K

SCALE: 1/8" = 1'-0"

OSBORN PROJECT NO. 13886  
DRAWN: OSBORN  
CHECKED: OSBORN  
DATE: 5/1/08  
ISSUE NO: B&K

VC CAPITAL, LLC.  
THE PIPELINE AUTO SPA  
PLUMBING PLAN

OSBORN PROJECT NO. 13886  
DRAWN: OSBORN  
CHECKED: OSBORN  
DATE: 5/1/08  
ISSUE NO: B&K

SCALE: 1/8" = 1'-0"

OSBORN PROJECT NO. 13886  
DRAWN: OSBORN  
CHECKED: OSBORN  
DATE: 5/1/08  
ISSUE NO: B&K

VC CAPITAL, LLC.  
THE PIPELINE AUTO SPA  
PLUMBING PLAN

OSBORN PROJECT NO. 13886  
DRAWN: OSBORN  
CHECKED: OSBORN  
DATE: 5/1/08  
ISSUE NO: B&K

SCALE: 1/8" = 1'-0"

OSBORN PROJECT NO. 13886  
DRAWN: OSBORN  
CHECKED: OSBORN  
DATE: 5/1/08  
ISSUE NO: B&K

VC CAPITAL, LLC.  
THE PIPELINE AUTO SPA  
PLUMBING PLAN

OSBORN PROJECT NO. 13886  
DRAWN: OSBORN  
CHECKED: OSBORN  
DATE: 5/1/08  
ISSUE NO: B&K

SCALE: 1/8" = 1'-0"

OSBORN PROJECT NO. 13886  
DRAWN: OSBORN  
CHECKED: OSBORN  
DATE: 5/1/08  
ISSUE NO: B&K

VC CAPITAL, LLC.  
THE PIPELINE AUTO SPA  
PLUMBING PLAN

OSBORN PROJECT NO. 13886  
DRAWN: OSBORN  
CHECKED: OSBORN  
DATE: 5/1/08  
ISSUE NO: B&K

SCALE: 1/8" = 1'-0"

OSBORN PROJECT NO. 13886  
DRAWN: OSBORN  
CHECKED: OSBORN  
DATE: 5/1/08  
ISSUE NO: B&K

VC CAPITAL, LLC.  
THE PIPELINE AUTO SPA  
PLUMBING PLAN

OSBORN PROJECT NO. 13886  
DRAWN: OSBORN  
CHECKED: OSBORN  
DATE: 5/1/08  
ISSUE NO: B&K

SCALE: 1/8" = 1'-0"

OSBORN PROJECT NO. 13886  
DRAWN: OSBORN  
CHECKED: OSBORN  
DATE: 5/1/08  
ISSUE NO: B&K

VC CAPITAL, LLC.  
THE PIPELINE AUTO SPA  
PLUMBING PLAN

OSBORN PROJECT NO. 13886  
DRAWN: OSBORN  
CHECKED: OSBORN  
DATE: 5/1/08  
ISSUE NO: B&K

SCALE: 1/8" = 1'-0"

OSBORN PROJECT NO. 13886  
DRAWN: OSBORN  
CHECKED: OSBORN  
DATE: 5/1/08  
ISSUE NO: B&K

VC CAPITAL, LLC.  
THE PIPELINE AUTO SPA  
PLUMBING PLAN

OSBORN PROJECT NO. 13886  
DRAWN: OSBORN  
CHECKED: OSBORN  
DATE: 5/1/08  
ISSUE NO: B&K

SCALE: 1/8" = 1'-0"

OSBORN PROJECT NO. 13886  
DRAWN: OSBORN  
CHECKED: OSBORN  
DATE: 5/1/08  
ISSUE NO: B&K

VC CAPITAL, LLC.  
THE PIPELINE AUTO SPA  
PLUMBING PLAN

OSBORN PROJECT NO. 13886  
DRAWN: OSBORN  
CHECKED: OSBORN  
DATE: 5/1/08  
ISSUE NO: B&K

SCALE: 1/8" = 1'-0"

OSBORN PROJECT NO. 13886  
DRAWN: OSBORN  
CHECKED: OSBORN  
DATE: 5/1/08  
ISSUE NO: B&K

VC CAPITAL, LLC.  
THE PIPELINE AUTO SPA  
PLUMBING PLAN

OSBORN PROJECT NO. 13886  
DRAWN: OSBORN  
CHECKED: OSBORN  
DATE: 5/1/08  
ISSUE NO: B&K

SCALE: 1/8" = 1'-0"

OSBORN PROJECT NO. 13886  
DRAWN: OSBORN  
CHECKED: OSBORN  
DATE: 5/1/08  
ISSUE NO: B&K

VC CAPITAL, LLC.  
THE PIPELINE AUTO SPA  
PLUMBING PLAN

OSBORN PROJECT NO. 13886  
DRAWN: OSBORN  
CHECKED: OSBORN  
DATE: 5/1/08  
ISSUE NO: B&K

SCALE: 1/8" = 1'-0"

OSBORN PROJECT NO. 13886  
DRAWN: OSBORN  
CHECKED: OSBORN  
DATE: 5/1/08  
ISSUE NO: B&K

VC CAPITAL, LLC.  
THE PIPELINE AUTO SPA  
PLUMBING PLAN

OSBORN PROJECT NO. 13886  
DRAWN: OSBORN  
CHECKED: OSBORN  
DATE: 5/1/08  
ISSUE NO: B&K

SCALE: 1/8" = 1'-0"

OSBORN PROJECT NO. 13886  
DRAWN: OSBORN  
CHECKED: OSBORN  
DATE: 5/1/08  
ISSUE NO: B&K

VC CAPITAL, LLC.  
THE PIPELINE AUTO SPA  
PLUMBING PLAN

OSBORN PROJECT NO. 13886  
DRAWN: OSBORN  
CHECKED: OSBORN  
DATE: 5/1/08  
ISSUE NO: B&K

SCALE: 1/8" = 1'-0"

OSBORN PROJECT NO. 13886  
DRAWN: OSBORN  
CHECKED: OSBORN  
DATE: 5/1/08  
ISSUE NO: B&K

VC CAPITAL, LLC.  
THE PIPELINE AUTO SPA  
PLUMBING PLAN

OSBORN PROJECT NO. 13886  
DRAWN: OSBORN  
CHECKED: OSBORN  
DATE: 5/1/08  
ISSUE NO: B&K

SCALE: 1/8" = 1'-0"

OSBORN PROJECT NO. 13886  
DRAWN: OSBORN  
CHECKED: OSBORN  
DATE: 5/1/08  
ISSUE NO: B&K

VC CAPITAL, LLC.  
THE PIPELINE AUTO SPA  
PLUMBING PLAN

OSBORN PROJECT NO. 13886  
DRAWN: OSBORN  
CHECKED: OSBORN  
DATE: 5/1/08